



G. BONOMI & FIGLI

FLUTED SERIES

EU DESIGN MANUAL

ABOUT G. BONOMI & FIGLI

SWINGING DOOR HARDWARE

SLIDING DOOR HARDWARE

WINDOW & PATIO DOOR HARDWARE

ACCESSORIES



Circa 1930s.

## ABOUT G. BONOMI & FIGLI



Since 1720, northern Italy beheld generations of inspiration for G. Bonomi & Figli and it is an appropriate crucible for a renaissance of modern design in architectural hardware. Our foundry and workshop in Tione di Trento, cradled by the Italian Alps and sustained in lush valleys coursing with streams and rivers, has taken a quietly visionary stance upon its establishment near the turn of the twentieth century by Giuseppe Bonomi. Centuries of mastering brass led this family-owned enterprise to embrace a thoughtful new engagement with nature that would blend the rigor of craftsmanship with the romance of artistry to re-imagine our connection to our environment – in our homes and in the world beyond. The waters that nourished this verdant township would shape their destinies; the Bonomi family powered their operations with hydroelectricity, recycling their wastewater and excess materials to bring energy to the region and create a sustainable model to ensure its pristine presence for years to come.

This rapture with the natural surroundings would be balanced by a definitive industriousness and a breathtaking sense of the essence of modernity. With an emphasis on precise production and an elegant distillation of forms, the work of G. Bonomi & Figli ushered in a Modernist mood that heralded the influential design philosophy of the International Style, from *architettura funzionale* in Italy to the global movement of Bauhaus. Our signature collections embody the transcendent allure of these timeless styles. Maintaining our bold yet considered approach, we realize each of these pieces with a blend of traditional techniques and the latest technologies. Lifetimes of experience allow us to custom craft our collection to the specifications of our clientele while ensuring consistency and compliance for every use. Our entire family and each member of our workshop has a passion for quality and an eye for detail throughout the production process to create extraordinary results that resonate with a sophisticated sensibility.



Circa 1930s.

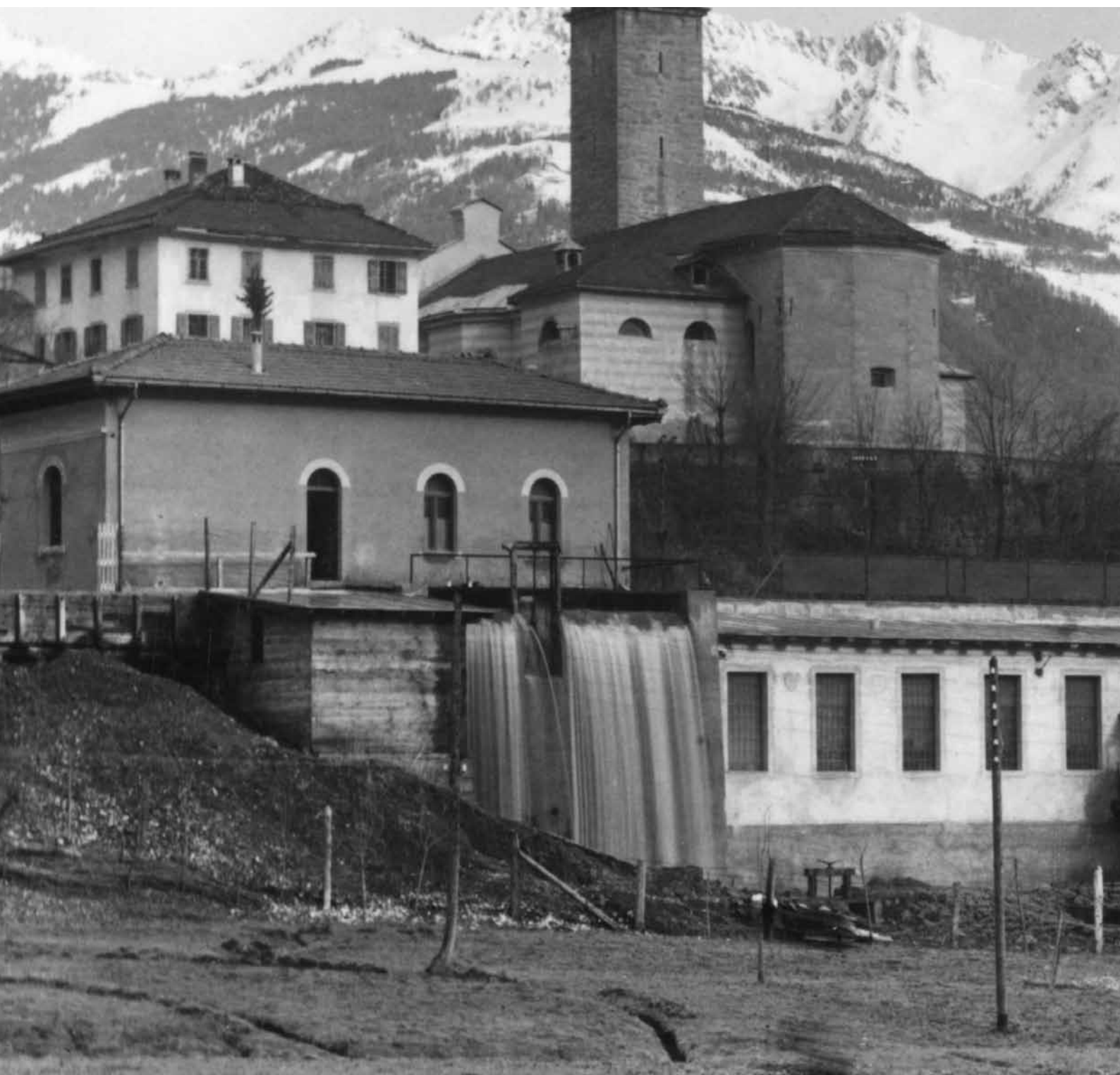


## OUR HISTORY



The story of G. Bonomi & Figli is also the history of a spectacular yet humble region of northern Italy and a family that spans five generations of art and craft. From the town of Lumezzane in Lombardy, a region renowned for its industry, the Bonomi forefathers established a tradition of brass work and manufacturing that has been passionately pursued since 1720. Nearly two centuries later, Giuseppe Bonomi was the first to realize their distinctive approach with the establishment of the first Bonomi foundry, or fusina, in Tione di Trento. The fusina linked together not only generations of the Bonomi family but also the entire production process with the sustenance of this bucolic township at the foot of the Alps. This integral connection with the environment began with the naming of the workshop, GBT, linking the founder's initials with those of the province; it found its ultimate realization in the harnessing of hydroelectric energy to power its operations and Tione di Trento itself.

With the responsible engagement of natural resources, GBT supported the growth of this idyllic valley as it quietly mastered the most important movements in design history. The subtle synthesis of efficiency and expressiveness embodied in Modernism represented the richest effulgence of the Bonomi family approach. Hallmarks of the International Style that defined the early twentieth century were evinced in generations of sensitivity to elemental abundance honed by a straightforward approach to summoning the soul of their materials for functional use. This honesty in materials and respect for fabrication, ensuring the dignity of each step of the process for all concerned, speaks to the primordial and profound beauty at the core of Modernist philosophy. G. Bonomi & Figli is pleased to introduce a renaissance of an important era of design and family history with complete hardware collections for elegant environments, produced in the same factory using original designs from our archives crafted to fit the needs of today.



Circa 1930s.

## OUR ENVIRONMENT



An intimate connection with our environment defines the work of G. Bonomi & Figli. This relationship begins and ends where the Chiese, Rendena and Giudicarie Valleys meet in the province of Trento in northern Italy. Here, on the site of ancient Gaul and Roman settlements between the Arnó and Sarca rivers, the inhabitants found their riches in their surroundings, inspiring regional creations renowned for their sensual simplicity such as polenta and grappa. The purity of this area resonated with the vision of Giuseppe Bonomi, who based the first family foundry in the shadow of the Brenta Dolomites amid the far western reaches of the Alps in the early eighteenth century. This snowy zenith frames the GBT workshop to this day, yet it was more earthly sources that inspired the Bonomi family to their most prescient engagement with “nature.”

Tione di Trento’s most valuable natural resources were the resilience of its people and the water that ran through their land. Combining independence and ingenuity, the Bonomi family workshop harnessed the power of Alpine waters to run on hydroelectric energy. This resourcefulness set their factory apart as the first to both utilize and provide electricity in the region. Not only is fresh water taken to power its production process, but also the resulting wastewater is filtrated to ensure that their sources – the surrounding streams, rivers and lakes, including the largest lake in Italy – remain as clean for the region as when the company was first established centuries ago. A culmination of a progressive perspective on the stewardship of the environment that its people prize above all, the workshop continues to respect a pact to balance the use of the land with the protection of its treasures. This thinking extends to their materials, as well; the foundry uses every opportunity to recycle its brass following the fabrication of their designs. By embracing the utility of the past to provide for their future in a diversity of senses, G. Bonomi & Figli has quietly maintained the spirit of sustainability through the present day.



Circa 1930s.



## OUR PRODUCTION



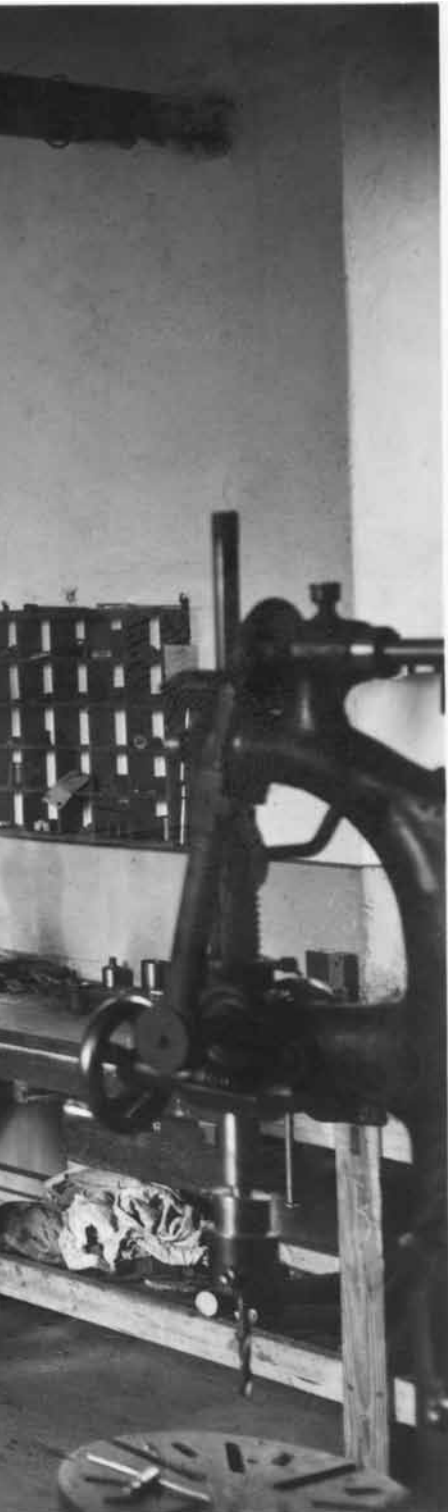
A personal commitment to artistry, craftsmanship and industry vivifies centuries of family tradition as well as the tenets of modern design. Our collections illustrate our belief that the integrity of the production process is as much a reflection of beauty as its final form. Resolved to conserve our resources and inspired by the ingenuity of our leanest times, we have held fast to this balanced ethos since our inception. We have continually evaluated our organizational processes and evolved our technology with the times to ensure our clientele receives the benefits of our attention in cost as well as quality. G. Bonomi & Figli imbues each step of execution with this understanding and in turn every employee, many of whom are with us for a lifetime, brings this into the work they do to create each piece.

Our embrace of past and present extends to the myriad techniques both historical and new employed to fashion our collections. From sand casting to lost wax, heat molding to CNC technology, every technique is pursued with the utmost efficiency and expressiveness to realize the breadth and depth of our archives and inspire future designs. Our clientele may choose to explore from our moulds and catalogs to revive an architectural era through the finest technical and artistic techniques and we proudly produce our signature collection to specifications. Housing every facet of production under the aegis of our workshop continues to inspire our intimate awareness of the process and encourages us to refine our approach with the latest technologies to enhance historical knowledge. Our accommodating stock setup is specifically programmed to deliver each order with speed and safety while minimizing waste and delay. The value of our holistic perspective and sense of fairness is clear in the ultimate product from our workshop: the satisfaction of our clients.



Circa 1930s.

## OUR TECHNOLOGY



The ability to think ahead while respecting our traditions and resources has defined our distinct presence in the realm of architectural hardware from our inception. Blending a simple philosophy and thoughtful innovation, the pastoral setting of our workshop in northern Italy presaged the most influential modern design movements of the early twentieth century. Technological advances in every step of the production process have allowed us to achieve the maximum effect from our materials with minimum impact to the environment. This exquisite unity of aestheticism and efficiency is not only at the root of Modernism but also our family history.

G. Bonomi & Figli brings this historic perspective to the current global marketplace with a bold embrace of visionary processes that ensure the consistency and quality of our collections. We start with processes that yield the strongest results, including hot and cold forging, with a focus on near net shaping to minimize cost and waste from our initial engagement with the material. This precision is maintained through the most up-to-date computer machining to realize and replicate stunning finished results. From custom specifications to standard orders, each piece incorporates the most vital technologies, including CNC lathes, earth and shell casting, die casting and hot pressing and stamping. We also use computer programming to design as well as manufacture our molds based upon three-dimensional modeling. Through the entirety of our secondary operations, up to and including finishing, we take advantage of technological progress in the field to provide workmanship recalling handcrafted techniques with a consistency, from piece to piece and across our collections, that is only possible with modern machines and robotic tools. With this priority, we continue to dedicate ourselves to exploring technology and refining our processes with every piece we make.



Circa 1930s.



## OUR FINISHING



Brass is the soul of our expertise and it is the material at the core of our final finishing process. Through prehistory and ancient civilizations to the modern era, the utility, strength and longevity of brass has assured its place in every environment from the largest institutions to private homes. G. Bonomi & Figli ensures that each member of our workshop understands the ultimate vision for the product, nurturing a solid respect for its natural origins that contributes to the integrity and beauty of its ultimate form. Our stunning finishes are the final step of the creative process yet they vividly illustrate the concern that we have shown throughout for offering conscious and consistent investment pieces from our company.

Finishes have gone in and out of vogue, but we have always kept our focus upon creating long-lasting collections with the best technology available. We have made significant investments in robotic technologies that enhance the process and presence of our rich finishes, however, we only use these if it makes sense for the final product. By hand or by machine, we are unmatched in the flawless execution of grinding, sanding, polishing, plating, highlighting and patination – all done in-house in the forward-thinking spirit of our forefathers. Indeed, the future of our work is the ultimate marker of success for our finishings. Finishing only enhances, never overwhelms, the detail in our collections, speaking to the essence of their being and their potential in your hands. The value of this approach may not be immediately apparent; only through sustaining a personal engagement with our pieces over many years and uses does this investment in endurance and elegance truly reveal itself. As we provide for generations of personal use in a home environment, we also see to the persistence of inspiration from our natural surroundings by controlling excess and recycling wastewater resulting from our finishing process.



Circa 1930s.

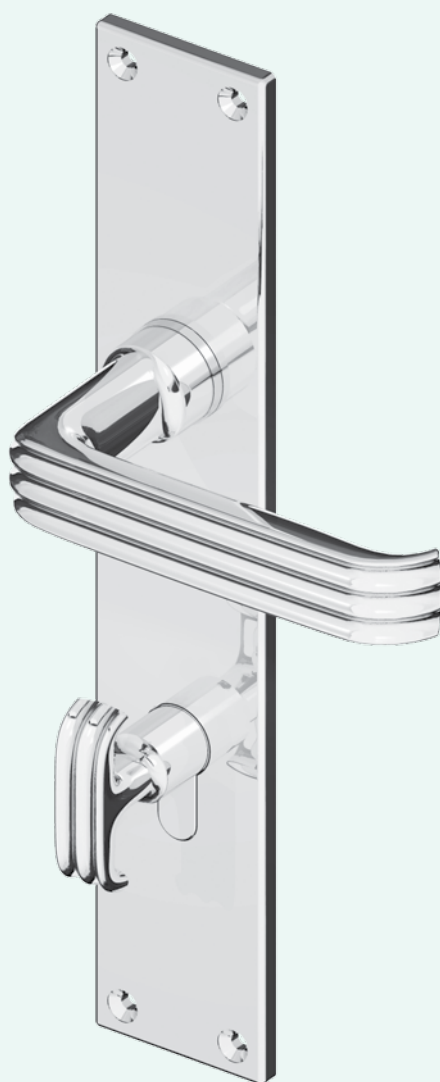
## OUR STOCK



The attention that we invest in the creation and production of our collections also extends to our stocking and shipping system. Overseeing our stock of raw materials is the primary step to establishing our efficiency and effectiveness. Thinking ahead with multiple levels of inventory and anticipation of annual material consumption translates to the stability of the present. With a healthy stock for production, this resource capitalization is an investment in consistent costs and client security. G. Bonomi & Figli takes advantage of this positioning to maintain a semi-raw stock in addition to a full assortment of finished pieces on hand. The final steps of finishing and mounting are executed to specification when an order is placed. This made-to-order approach minimizes production time and enhances our adaptability to a range of requests.

As a brand with a global outlook, we plan for the presence of our collections in myriad environments. Our stock includes the mechanical parts and devices as well as systems for assembly and maintenance to craft the perfect fit for special requests and standards worldwide. We not only satisfy requirements within the E.U. and across the U.S., but also work to ensure that each piece is well made for a variety of intended usages. For residential or commercial use, cycle testing is gauged to the spaces that incorporate our hardware. These steps grant our clients the security of knowing that the results of our shared vision will be enjoyed no matter where they are.

The consistency and quality of our initial organization extends to the final phase of packaging and shipping. Finished goods from our signature collections are pre-packaged in anticipation of cyclical sales requests. Allowing for immediate shipment, we are pleased to minimize delays so that our clients may enjoy their pieces as soon as possible. By planning for the future satisfaction of our clientele, we make sure that nothing gets in the way of appreciating the work we have done for generations.





## FLUTED COLLECTION

Every door realizes a boundary between spaces; each represents a decision to be made. Knob, lever, turn or pull – the handle represents a primal point of connection and the possibility of discovery within. Since its inception, E.R. Butler & Co. has been committed to designing and producing the most exquisite architectural hardware with this unique understanding in mind. Respect for the traditions of craftsmanship and the artistry of historical eras meets a vibrant embrace of current technology and contemporary living in work renowned worldwide. The culmination of a matchless vision, their collections are shaped by rigorous research, distinctive design, uncompromising production values and personal service. The result is a compelling and enduring presence appropriate for every environment. With the launch of the Fluted Collection, G. Bonomi & Figli and E.R. Butler & Co. begin an exclusive partnership realizing shared values and a dedication to the progressive and powerful foresight of its founders.

The revival of traditions begins with valuable insights from the past. In a stunning evocation of Modernism, the workshop in Tione di Trento produced prescient pieces of early twentieth century design in the International Style that comprised the origins of this sleek and sophisticated Collection. This reconsideration of timeless beauty became the baseline not only for future collections but also for a fresh look at the possibilities of architectural hardware in the twenty-first century. Synthesizing efficiency in production and elegance of form, E.R. Butler & Co. has worked with the Bonomi family to introduce a revolutionary structure for design and manufacturing focused on consistency and compatibility. This hardware classification system embodies a holistic perspective on the needs of residential and commercial environments and provides the client with a guide that ensures a world of solutions for the range of technical and global applications. 3-D software and digital imaging allows us to imagine a breadth of possibilities with the inspiration of the past. We are uniquely positioned for launch in the U.S. market with a collection and a comprehensive new approach to goods and services that proudly speaks to our heritage.



SWINGING DOOR HARDWARE

MORTISE LOCK TRIM

HANDLES

LEVERS

T-HANDLES

KNOBS

ROSES & BACKPLATES

ROSES

BACKPLATES

RECTANGULAR ESCUTCHEONS

SECURITY ROSES & ESCUTCHEONS

THUMB TURNS

EMERGENCY RELEASE COVERS

DOOR PULLS

EDGE PULLS

PUSH PLATES

GLASS DOOR HANDLES

HINGES



Shown on Escutcheon Plate No. 0131.



## FLUTED SERIES

## LEVER HANDLE

ART. NO. 0701

Compatible with all roses and escutcheon plates for door and window applications.

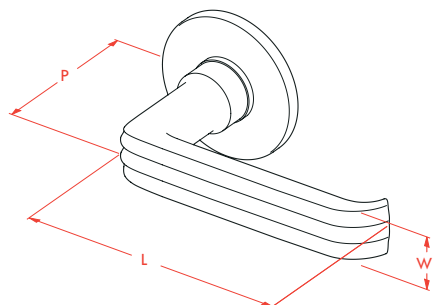
For single lever handle specify hand (right hand shown).

Solid forged brass.

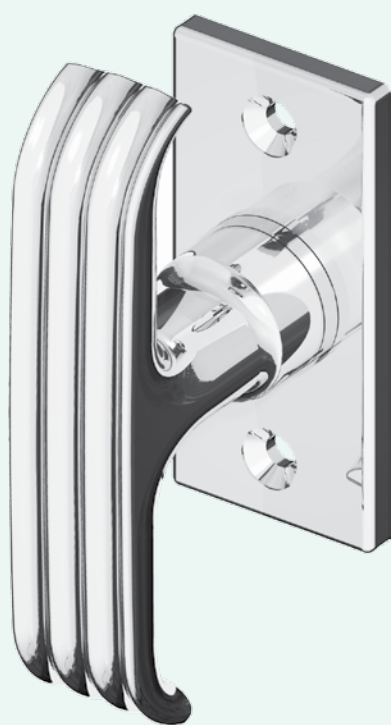
### DIMENSIONS

Item	Size	L	W	P
<b>0701.00.01</b>	XS	76	18	47
<b>0701.00.11</b>	S	88	21	53
<b>0701.00.21</b>	M	101	21	56
<b>0701.00.31</b>	L	114	21	59
<b>0701.00.41</b>	XL	127	23	64

Dimensions given in millimeters.



Shown on Rose No. 0142.



Shown on Rectangular Escutcheon No. 0146.

FLUTED SERIES

T-HANDLE

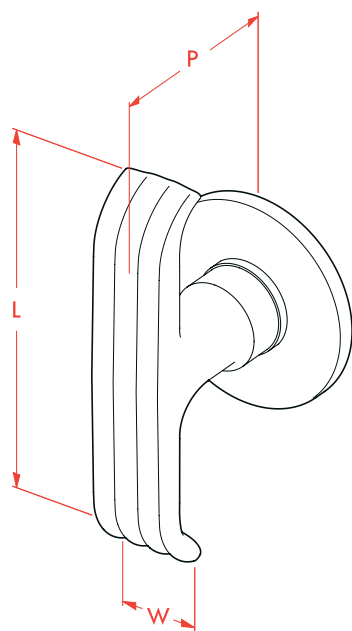
ART. NO. 0703

Compatible with all roses and  
escutcheon plates for door and window  
applications.  
Universal handing.  
Solid forged brass.

DIMENSIONS

Item	Size	L	W	P
0703.00.01	XS	76	18	47
0703.00.11	S	88	21	53
0703.00.21	M	101	21	56
0703.00.31	L	114	21	59
0703.00.41	XL	127	23	64

Dimensions given in millimeters.



Shown on Rose No. 0142.



Shown on Escutcheon Plate No. 0131.

FLUTED SERIES

DOOR KNOB

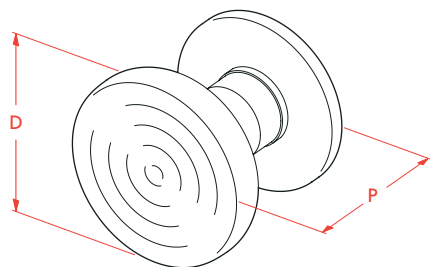
ART. NO. 0707

Compatible with all roses and  
escutcheon plates for door and window  
applications.  
Regularly furnished with 8 mm spindle.  
Universal handing.  
Solid turned brass.

DIMENSIONS

Item	Size	D	P
<b>0707.00.01</b>	XS	45	39
<b>0707.00.11</b>	S	50	41
<b>0707.00.21</b>	M	55	43
<b>0707.00.31</b>	L	60	45.5
<b>0707.00.41</b>	XL	65	47.5

Dimensions given in millimeters.



Shown on Rose No. 0142.



ROSE ESCUTCHEON (5MM)  
WITH CONCEALED OR EXPOSED SCREWS

FLUTED SERIES  
ART. NO. 0142

May be used with any fluted lever,  
t-handle or knob.  
Solid turned brass.

DIMENSIONS

Item	D	T
<b>0142.01.01</b>	45	5
<b>0142.01.11*</b>	50	5
<b>0142.01.21*</b>	55	5
<b>0142.01.31*</b>	60	5
<b>0142.01.41*</b>	65	5

Dimensions given in millimeters.

\*May be through-bolted

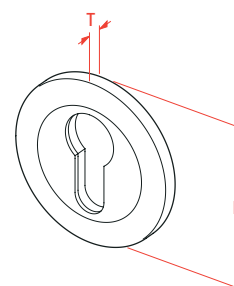
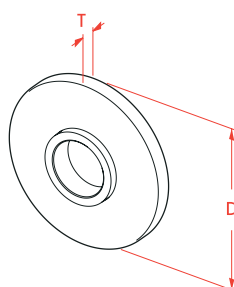
For PZ cylinders.  
Solid turned brass.

DIMENSIONS

Item	D	T
<b>0142.10.01</b>	45	5
<b>0142.10.11*</b>	50	5
<b>0142.10.21*</b>	55	5
<b>0142.10.31*</b>	60	5
<b>0142.10.41*</b>	65	5

Dimensions given in millimeters.

\*May be through-bolted





## FLUTED SERIES

ART. NO. 0142

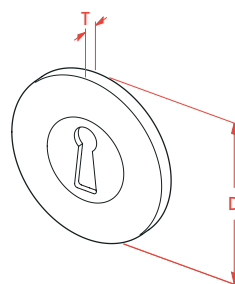
With FI (Patent) keyhole.  
Solid turned brass.

### DIMENSIONS

Item	D	T
0142.25.01	45	5
0142.25.11*	50	5
0142.25.21*	55	5
0142.25.31*	60	5
0142.25.41*	65	5

Dimensions given in millimeters.

\*May be through-bolted



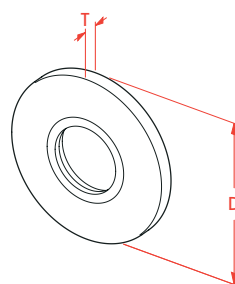
For RZ cylinders.  
Solid turned brass.

### DIMENSIONS

Item	D	T
0142.30.01	45	5
0142.30.11*	50	5
0142.30.21*	55	5
0142.30.31*	60	5
0142.30.41*	65	5

Dimensions given in millimeters.

\*May be through-bolted





## ROSE ESCUTCHEON (10 MM)

## FLUTED SERIES

ART. NO. 0143

Bi-directional spring-loaded system.  
Solid turned brass.  
May be through-bolted.

### DIMENSIONS

Item	D	T
<b>0143.01.01</b>	45	10
<b>0143.01.11*</b>	50	10
<b>0143.01.21*</b>	55	10
<b>0143.01.31*</b>	60	10
<b>0143.01.41*</b>	65	10

Dimensions given in millimeters.

\*May be through-bolted

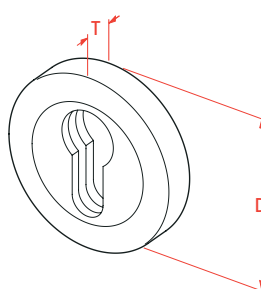
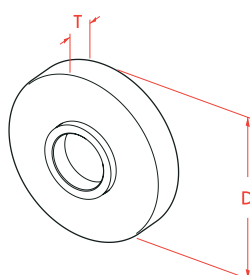
For PZ cylinders.  
Solid turned brass.

### DIMENSIONS

Item	D	T
<b>0143.10.01</b>	45	10
<b>0143.10.11*</b>	50	10
<b>0143.10.21*</b>	55	10
<b>0143.10.31*</b>	60	10
<b>0143.10.41*</b>	65	10

Dimensions given in millimeters.

\*May be through-bolted



FLUTED SERIES

ART. NO. 0143

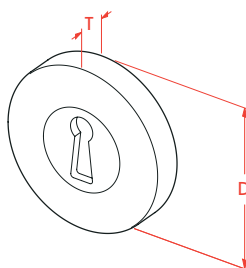
With FI (Patent) keyhole.  
Solid turned brass.

DIMENSIONS

Item	D	T
0143.25.01	45	10
0143.25.11*	50	10
0143.25.21*	55	10
0143.25.31*	60	10
0143.25.41*	65	10

Dimensions given in millimeters.

\*May be through-bolted



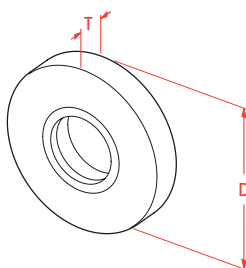
For RZ cylinders.  
Solid turned brass.

DIMENSIONS

Item	D	T
0143.30.01	45	10
0143.30.11*	50	10
0143.30.21*	55	10
0143.30.31*	60	10
0143.30.41*	65	10

Dimensions given in millimeters.

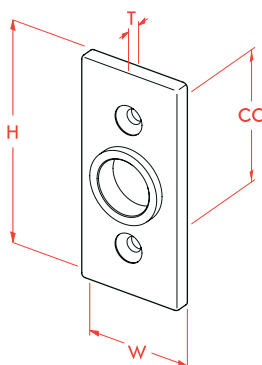
\*May be through-bolted



## RECTANGULAR ROSE ESCUTCHEONS

## FLUTED SERIES

ART. NO. 0146

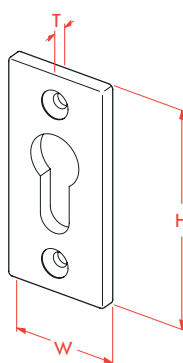


May be used with any fluted lever, t-handle or knob.  
Also available with 43 mm CC screw spacing for windows.  
Solid machined brass.

### DIMENSIONS

Item	H	W	T	CC
<b>0146.01</b>	75	35	5	
<b>0146.90</b>	75	35	5	43

Dimensions given in millimeters.



For PZ cylinders.  
Solid machined brass.

### DIMENSIONS

Item	H	W	T
<b>0146.10</b>	75	35	5

Dimensions given in millimeters.

FLUTED SERIES

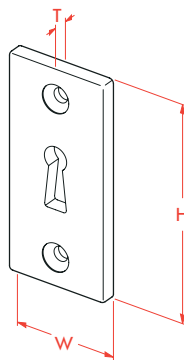
ART. NO. 0146

With FI (Patent) keyhole.  
Solid machined brass.

DIMENSIONS

Item	H	W	T
<b>0146.25</b>	75	35	5

Dimensions given in millimeters.

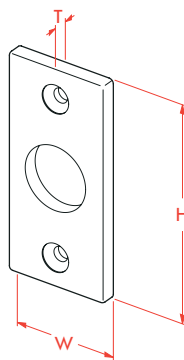


For RZ cylinders.  
Solid machined brass.

DIMENSIONS

Item	H	W	T
<b>0146.30</b>	75	35	5

Dimensions given in millimeters.





## ESCUTCHEON PLATE

FOR LEVER HANDLES OR WC

## FLUTED SERIES

ART. NO. 0131



May be used with any fluted lever,  
t-handle or knob.

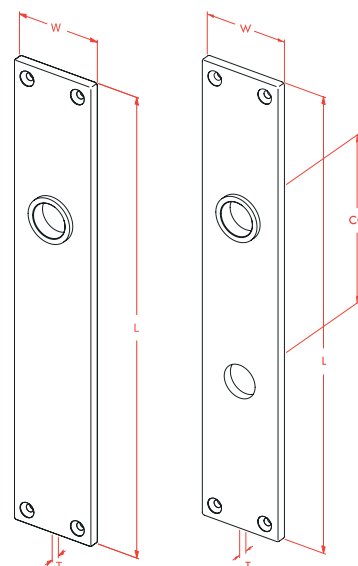
Solid machined brass.

### DIMENSIONS

Item	L	W	T	C/C
<b>0131.01.01</b>	150	35	5	–
<b>0131.01.11</b>	200	40	5	–
<b>0131.01.21</b>	250	45	5	–
<b>0131.01.31</b>	300	50	5	–
<b>0131.01.41</b>	350	55	5	–
<b>0131.06.01</b>	150	35	5	78
<b>0131.06.11</b>	200	40	5	78
<b>0131.06.21</b>	250	45	5	78
<b>0131.06.31</b>	300	50	5	78
<b>0131.06.41</b>	350	55	5	78

Dimensions given in millimeters.

Other cutouts and C/C spacings available. Consult price list.





## FLUTED SERIES

ART. NO. 0131

## ESCUTCHEON PLATE

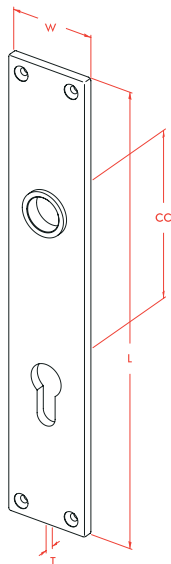
FOR PZ CYLINDERS

May be used with any fluted lever,  
t-handle or knob.  
Solid machined brass.

### DIMENSIONS

Item	L	W	T	C/C
0131.12.01	150	35	5	72
0131.12.11	200	40	5	72
0131.12.21	250	45	5	72
0131.12.31	300	50	5	72
0131.12.41	350	55	5	72
0131.16.11	200	40	5	92
0131.16.21	250	45	5	92
0131.16.31	300	50	5	92
0131.16.41	350	55	5	92

Dimensions given in millimeters.



Other cutouts and C/C spacings available. Consult price list.



## ESCUTCHEON PLATE

WITH FI (PATENT) KEYHOLE

## FLUTED SERIES

ART. NO. 0131

May be used with any fluted lever,  
t-handle or knob.

Solid machined brass.

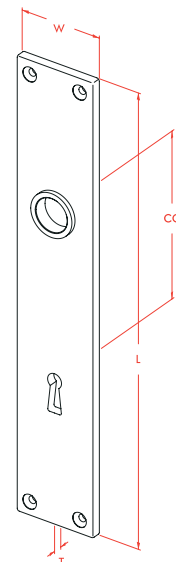
### DIMENSIONS

Item	L	W	T	C/C
<b>0131.26.01</b>	150	35	5	56
<b>0131.26.11</b>	200	40	5	56
<b>0131.26.21</b>	250	45	5	56
<b>0131.26.31</b>	300	50	5	56
<b>0131.26.41</b>	350	55	5	56
<b>0131.27.01</b>	150	35	5	72
<b>0131.27.11</b>	200	40	5	72
<b>0131.27.21</b>	250	45	5	72
<b>0131.27.31</b>	300	50	5	72
<b>0131.27.41</b>	350	55	5	72
<b>0131.28.11</b>	200	40	5	90
<b>0131.28.21</b>	250	45	5	90
<b>0131.28.31</b>	300	50	5	90
<b>0131.28.41</b>	350	55	5	90

Dimensions given in millimeters.



Other cutouts and C/C spacings available. Consult price list.



## FLUTED SERIES

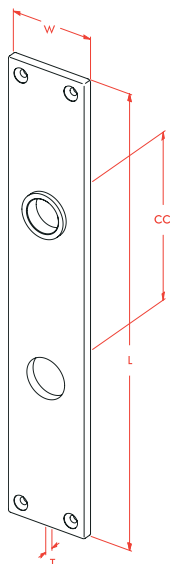
ART. NO. 0131

May be used with any fluted lever,  
t-handle or knob.  
Solid machined brass.

## DIMENSIONS

Item	L	W	T	C/C
0131.31.01	150	40	5	72
0131.31.11	200	40	5	72
0131.31.21	250	45	5	72
0131.31.31	300	50	5	72
0131.31.41	350	55	5	72
0131.32.01	150	40	5	78
0131.32.11	200	40	5	78
0131.32.21	250	45	5	78
0131.32.31	300	50	5	78
0131.32.41	350	55	5	78
0131.33.11	200	40	5	92
0131.33.21	250	45	5	92
0131.33.31	300	50	5	92
0131.33.41	350	55	5	92

Dimensions given in millimeters.



## ESCUTCHEON PLATE

FOR RZ CYLINDERS



Other cutouts and C/C spacings available. Consult price list.



## SECURITY PLATE SET

## FLUTED SERIES

SET. NO. TS 0133

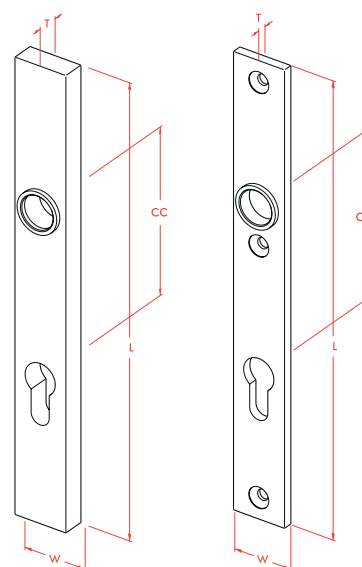
For PZ cylinders.  
Solid machined brass.

### DIMENSIONS

External	L	W	T	C/C
<b>TS 0133.11</b>	250	30	12	55
<b>TS 0133.12</b>	250	30	12	72
<b>TS 0133.16</b>	250	30	12	92

Internal	L	W	T	C/C
<b>TS 0133.11</b>	250	30	5	55
<b>TS 0133.12</b>	250	30	5	72
<b>TS 0133.16</b>	250	30	5	92

Dimensions given in millimeters.



FLUTED SERIES

SECURITY PLATE SET

SET. NO. TS 0134

For PZ cylinders.  
Solid machined brass.

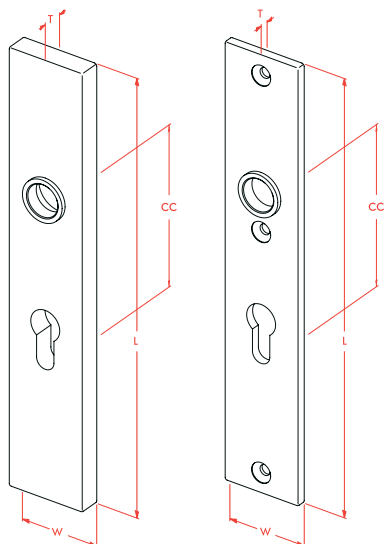
DIMENSIONS

External	L	W	T	C/C
<b>TS 0134.11</b>	250	55	12	55
<b>TS 0134.12</b>	250	55	12	72
<b>TS 0134.16</b>	250	55	12	92

Internal	L	W	T	C/C
<b>TS 0134.11</b>	250	55	5	55
<b>TS 0134.12</b>	250	55	5	72
<b>TS 0134.16</b>	250	55	5	92

Dimensions given in millimeters.





## SECURITY ROSE SET

## FLUTED SERIES

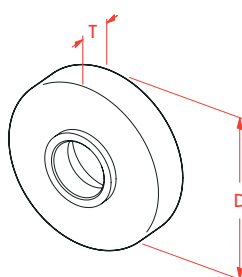
SET. NO. TS 0145.01

External rose.  
Solid turned brass.

### DIMENSIONS

<b>D</b>	55
<b>T</b>	12

Dimensions given in millimeters.

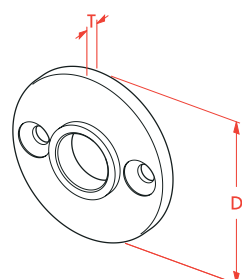


Internal rose.  
Solid turned brass.

### DIMENSIONS

<b>D</b>	55
<b>T</b>	5

Dimensions given in millimeters.





FLUTED SERIES

SET. NO. TS 0145.10

SECURITY ROSE SET

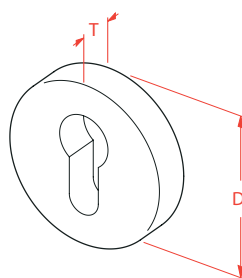
FOR PZ CYLINDERS

External rose.  
Solid turned brass.

DIMENSIONS

D 55  
T 12

Dimensions given in millimeters.

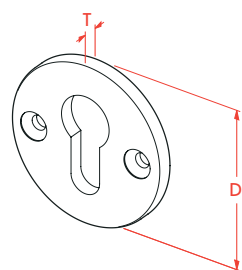


Internal rose.  
Solid turned brass.

DIMENSIONS

D 55  
T 5

Dimensions given in millimeters.





## PZ THUMB TURN

## FLUTED SERIES

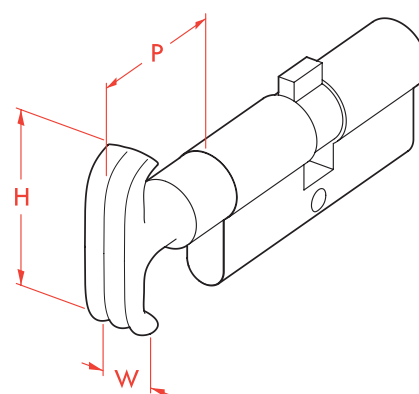
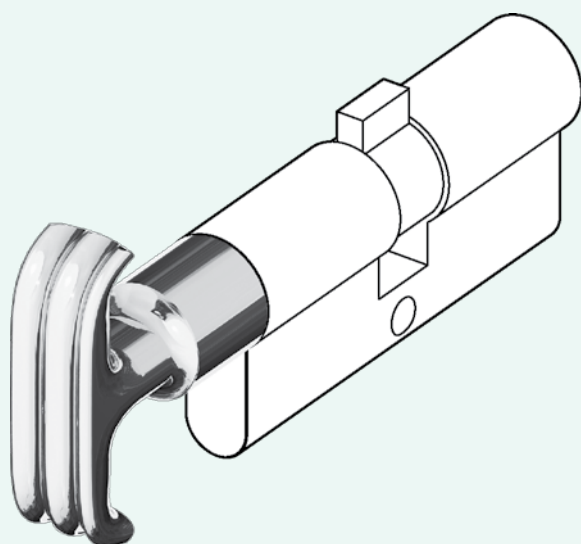
ART. NO. 0753.10

Solid forged brass.  
PZ cylinder not included.

### DIMENSIONS

H	44.5
W	13
P	29.5

Dimensions given in millimeters.



FLUTED SERIES

PZ THUMB TURN

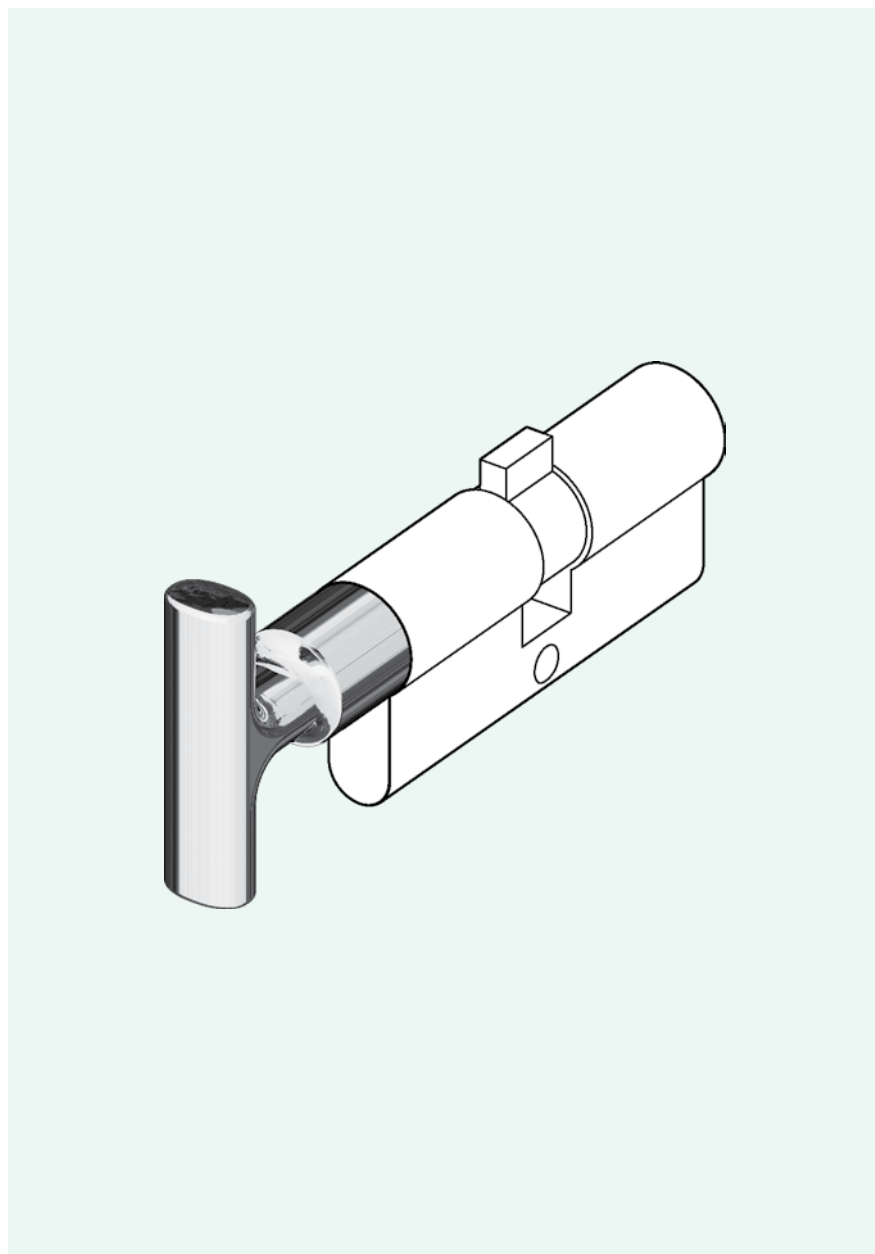
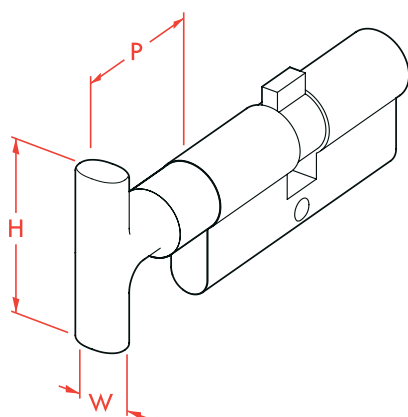
ART. NO. 0153.10

Solid machined brass.  
PZ cylinder not included.

DIMENSIONS

H	35
W	14
P	36

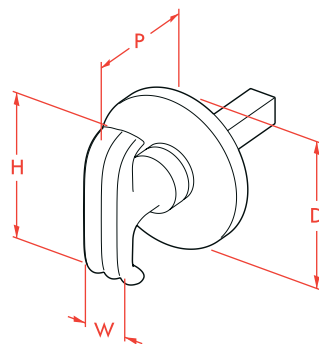
Dimensions given in millimeters.





## TURN AND RELEASE SET WITH CONCEALED SCREWS

## FLUTED SERIES SET. NO. TS 0742.83

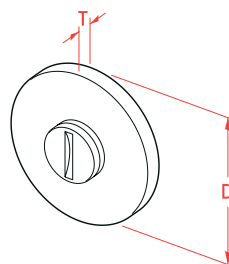


Thumb turn and rose.  
8 mm spindle.  
Also available with exposed screws.  
Solid forged brass thumb turn.  
Solid turned brass rose.

### DIMENSIONS

Set	H	W	P	D
<b>TS 0742.83.01</b>	44.5	13	29.5	45
<b>TS 0742.83.02</b>	44.5	13	29.5	50
<b>TS 0742.83.03</b>	44.5	13	29.5	55

Dimensions given in millimeters.



Emergency release and rose.  
Solid machined brass.

### DIMENSIONS

Set	T	D
<b>TS 0742.83.01</b>	5	45
<b>TS 0742.83.02</b>	5	50
<b>TS 0742.83.03</b>	5	55

Dimensions given in millimeters.

## FLUTED SERIES

SET. NO. TS 0142.83

## TURN AND RELEASE SET

WITH CONCEALED SCREWS

Thumb turn and rose.

8 mm spindle.

Also available with exposed screws.

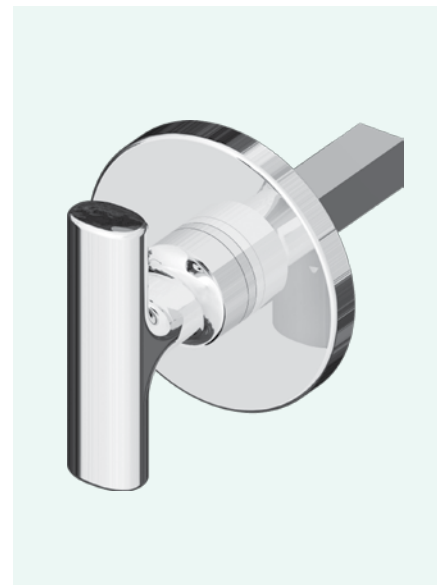
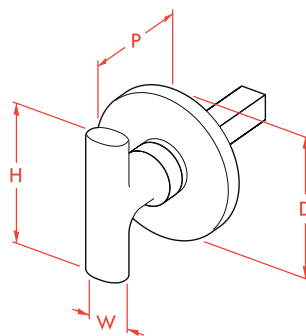
Solid forged brass thumb turn.

Solid turned brass rose.

### DIMENSIONS

Set	H	W	P	D
<b>TS 0142.83.01</b>	35	14	29.5	45
<b>TS 0142.83.02</b>	35	14	29.5	50
<b>TS 0142.83.03</b>	35	14	29.5	55

Dimensions given in millimeters.



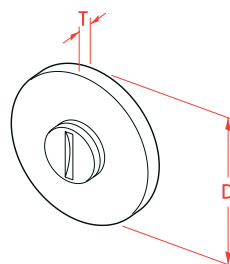
Emergency release and rose.

Solid machined brass.

### DIMENSIONS

Set	T	D
<b>TS 0142.83.01</b>	5	45
<b>TS 0142.83.02</b>	5	50
<b>TS 0142.83.03</b>	5	55

Dimensions given in millimeters.





## TURN AND RELEASE SET

## FLUTED SERIES

SET. NO. TS 0731.06



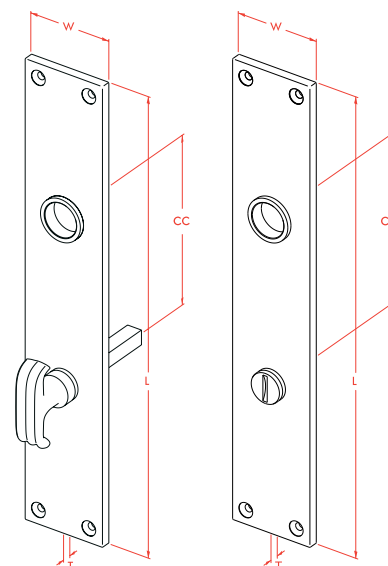
May be used with any fluted lever,  
t-handle or knob.  
8 mm spindle.  
Solid forged brass thumb turn.  
Solid machined brass release and plate.

### DIMENSIONS

Backplates	L	W	T	C/C
<b>TS 0731.06.01</b>	150	35	5	78
<b>TS 0731.06.11</b>	200	40	5	78
<b>TS 0731.06.21</b>	250	45	5	78
<b>TS 0731.06.31</b>	300	50	5	78
<b>TS 0731.06.41</b>	350	55	5	78

Dimensions given in millimeters.

Other C/C spacings available. Consult price list.





## FLUTED SERIES

## TURN AND RELEASE SET

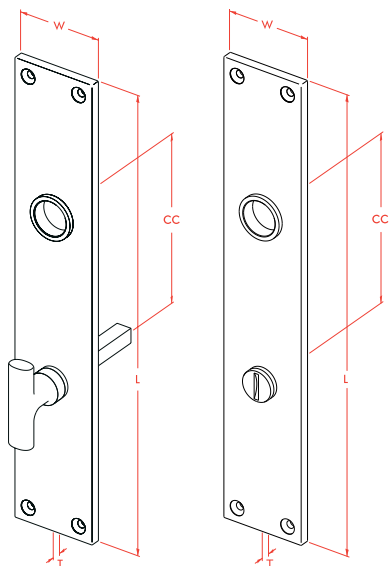
SET. NO. TS 0131.06

May be used with any fluted lever,  
t-handle or knob.  
8 mm spindle.  
Solid machined brass.

### DIMENSIONS

Backplates	L	W	T	C/C
<b>TS 0131.06.01</b>	150	35	5	78
<b>TS 0131.06.11</b>	200	40	5	78
<b>TS 0131.06.21</b>	250	45	5	78
<b>TS 0131.06.31</b>	300	50	5	78
<b>TS 0131.06.41</b>	350	55	5	78

Dimensions given in millimeters.



Other C/C spacings available. Consult price list.



KEYHOLE ESCUTCHEON  
WITH SWINGING COVER

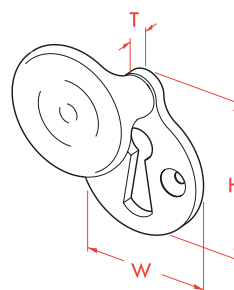
FLUTED SERIES  
ART. NO. 0756.25

Solid forged brass.

DIMENSIONS

H	48
W	38
T	7

Dimensions given in millimeters.



FLUTED SERIES

ART. NO. 0156.25

KEYHOLE ESCUTCHEON

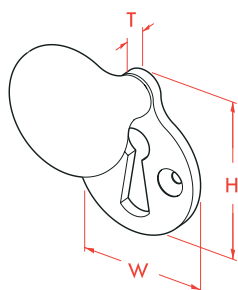
WITH SWINGING COVER

Solid forged brass.

DIMENSIONS

H	48
W	38
T	7

Dimensions given in millimeters.





KEYHOLE ESCUTCHEON  
WITH SWINGING COVER

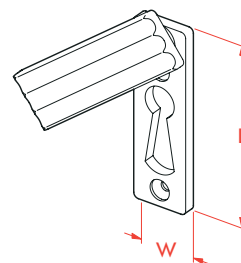
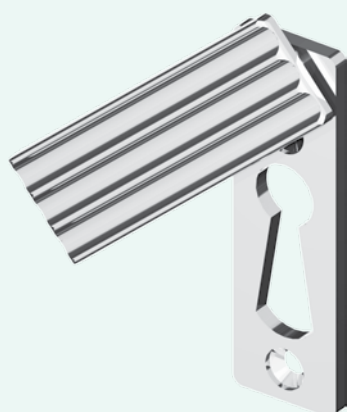
FLUTED SERIES  
ART. NO. 0758.25

Solid machined brass.

DIMENSIONS

H	56
W	17
P	6

Dimensions given in millimeters.



FLUTED SERIES

ART. NO. 0158.25

KEYHOLE ESCUTCHEON

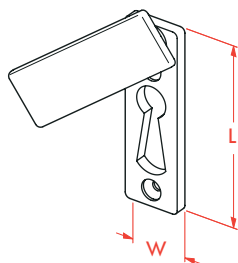
WITH SWINGING COVER

Solid machined brass.

DIMENSIONS

H	56
W	17
P	6

Dimensions given in millimeters.





## FLUTED TUBE PULL

## FLUTED SERIES

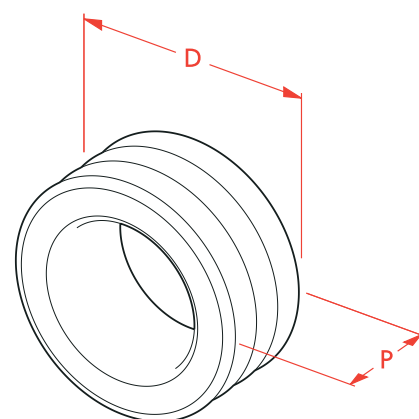
ART. NO. 0710

Solid turned brass.

### DIMENSIONS

Item	D	P
<b>0710.00.01</b>	45	20.8
<b>0710.00.11</b>	50	23.1
<b>0710.00.21</b>	55	25.4
<b>0710.00.31</b>	60	27.7
<b>0710.00.41</b>	65	30

Dimensions given in millimeters.



FLUTED SERIES

PULL HANDLE

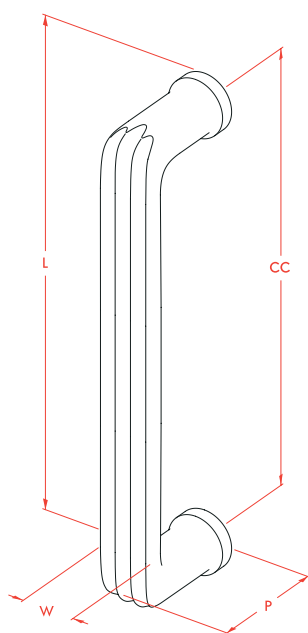
ART. NO. 0711

Solid forged brass.

DIMENSIONS

Item	L	CC	P	W
0711.00.01	173	150	48	21
0711.00.11	226	200	52	23
0711.00.21	278	250	56	26
0711.00.31	331	300	61	28
0711.00.41	383	350	65	30

Dimensions given in millimeters.





EDGE PULL

FLUTED SERIES

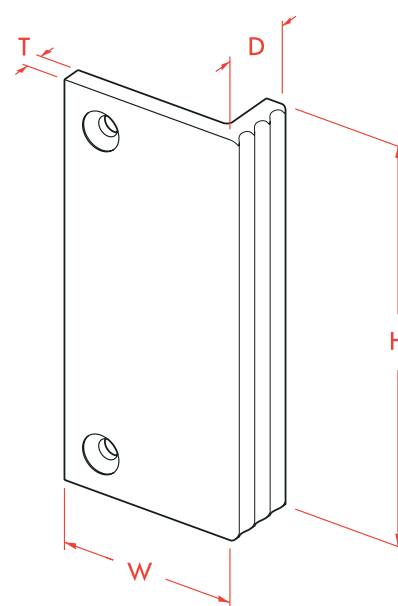
ART. NO. 0727

Solid extruded/machined brass.

#### DIMENSIONS

Item	D	W	T	H
<b>0727.00.51</b>	19	45.6	5	25
<b>0727.00.61</b>	19	45.6	5	50
<b>0727.00.71</b>	19	45.6	5	75
<b>0727.00.81</b>	19	45.6	5	100
<b>0727.00.91</b>	19	45.6	5	125
<b>0727.00.01</b>	19	45.6	5	150
<b>0727.00.11</b>	19	45.6	5	200
<b>0727.00.21</b>	19	45.6	5	250
<b>0727.00.31</b>	19	45.6	5	300
<b>0727.00.41</b>	19	45.6	5	350

Dimensions given in millimeters.





FLUTED SERIES

EDGE PULL

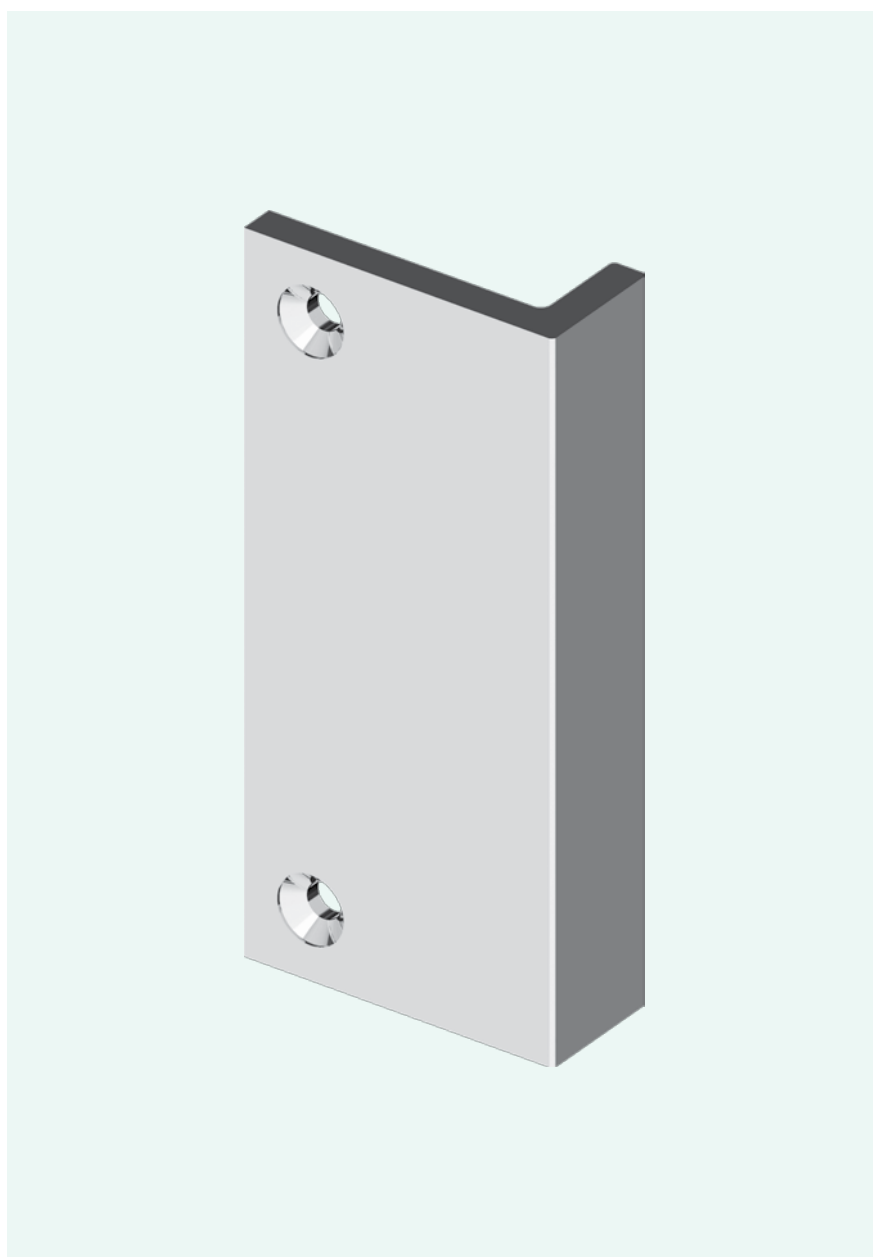
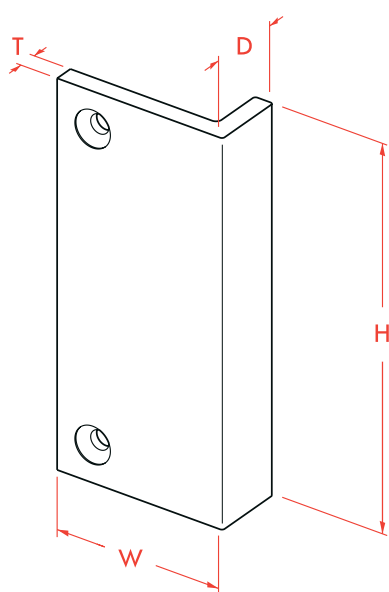
ART. NO. 0127

Solid extruded/machined brass.

DIMENSIONS

Item	D	W	T	H
0127.00.51	19	45.6	5	25
0127.00.61	19	45.6	5	50
0127.00.71	19	45.6	5	75
0127.00.81	19	45.6	5	100
0127.00.91	19	45.6	5	125
0127.00.01	19	45.6	5	150
0127.00.11	19	45.6	5	200
0127.00.21	19	45.6	5	250
0127.00.31	19	45.6	5	300
0127.00.41	19	45.6	5	350

Dimensions given in millimeters.





## PUSH PLATE

## FLUTED SERIES

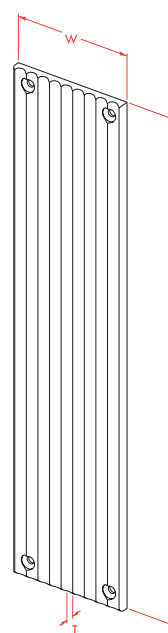
ART. NO. 0735

Solid machined brass.  
Plate thickness: 6 mm.

### DIMENSIONS

Item	W	L
<b>0735.00.01</b>	63	250
<b>0735.00.11</b>	71.5	300
<b>0735.00.21</b>	80	350
<b>0735.00.31</b>	88.5	400
<b>0735.00.41</b>	97	450

Dimensions given in millimeters.



FLUTED SERIES

ART. NO. 0135

Solid machined brass.  
Plate thickness: 6 mm.

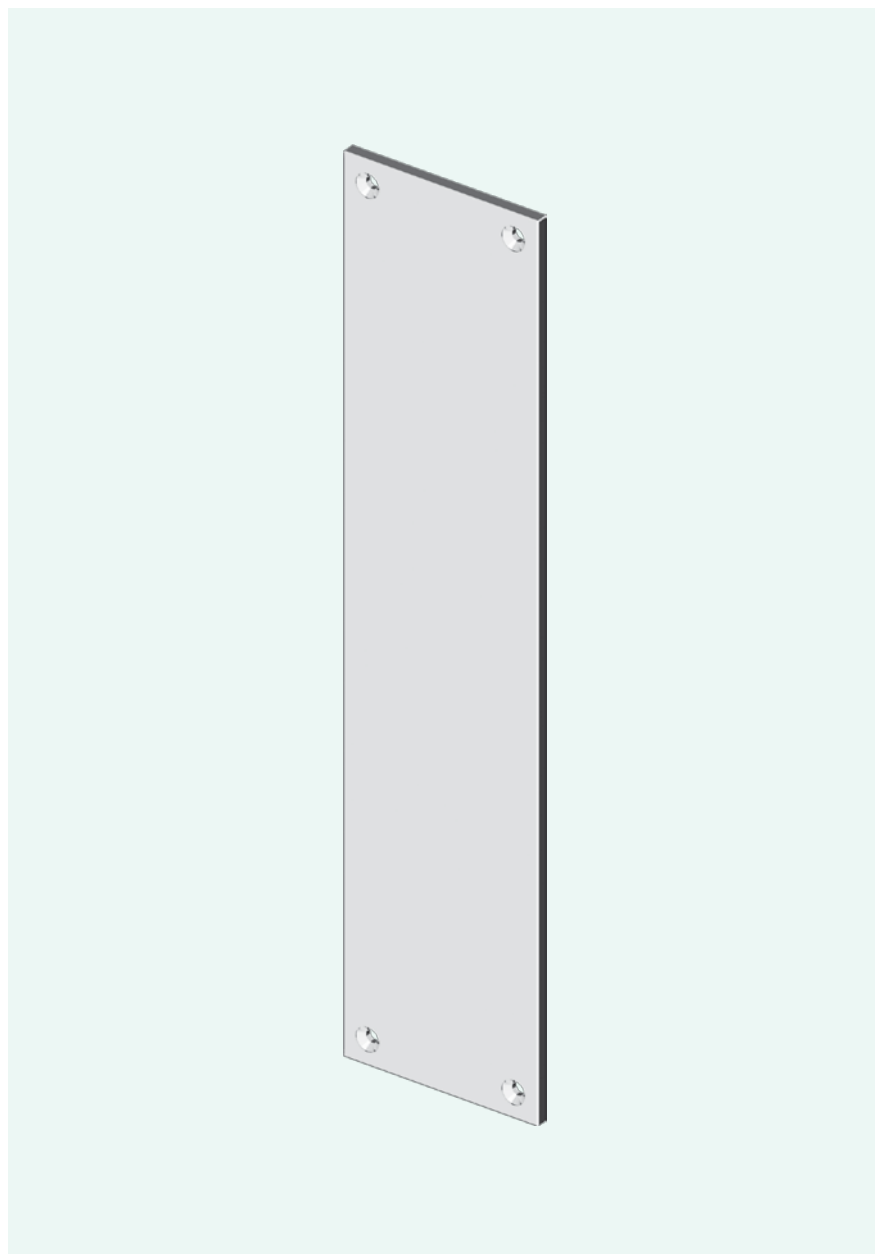
DIMENSIONS

Item	W	L
0135.00.01	63	250
0135.00.11	71.5	300
0135.00.21	80	350
0135.00.31	88.5	400
0135.00.41	97	450

Dimensions given in millimeters.



PUSH PLATE





## GLASS DOOR HANDLE

## FLUTED SERIES

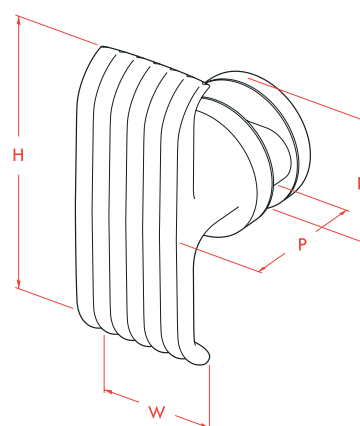
ART. NO. 0716.61

Solid forged brass.

### DIMENSIONS

H	102
W	41
P	47
D	44

Dimensions given in millimeters.



FLUTED SERIES

GLASS DOOR HANDLE

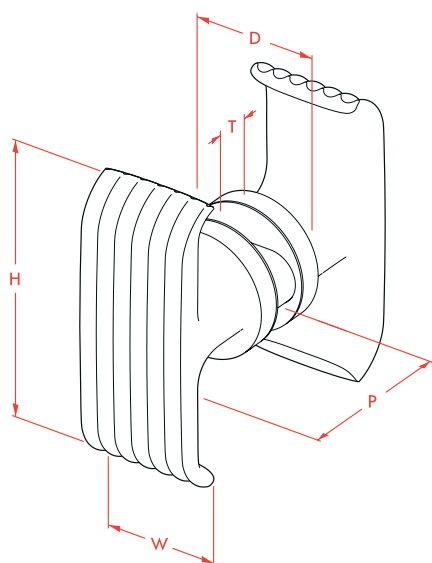
ART. NO. 0716.63

Solid forged brass.

DIMENSIONS

H	102
W	41
P	47
D	44

Dimensions given in millimeters.





## PAUMELLE HINGE

## FLUTED SERIES

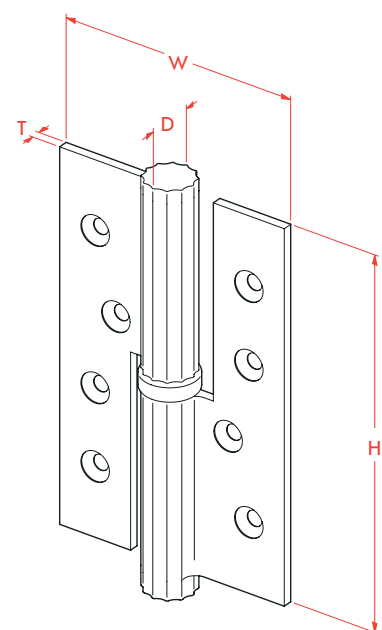
ART. NO. 0781

Designed for standard swing doors.  
Stainless steel pin and ball bearings.  
Specify hand (right hand shown).  
Solid extruded/machined brass.

### DIMENSIONS

Item	H	W	D	T	Hand
<b>0781.00.12</b>	100	75	16	3	RH
<b>0781.00.13</b>	100	75	16	3	LH
<b>0781.00.22</b>	120	75	16	3	RH
<b>0781.00.23</b>	120	75	16	3	LH
<b>0781.00.32</b>	140	75	16	3	RH
<b>0781.00.33</b>	140	75	16	3	LH

Dimensions given in millimeters.



FLUTED SERIES

PAUMELLE HINGE

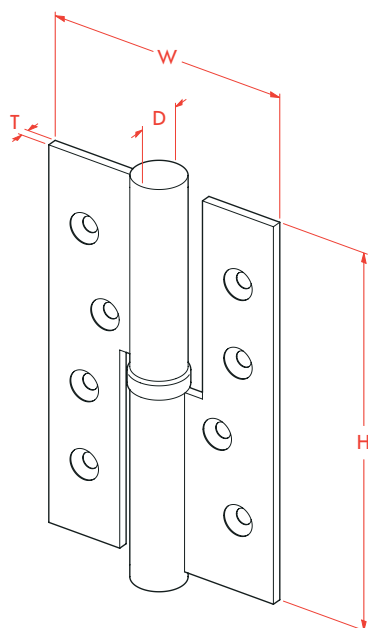
ART. NO. 0181

Designed for standard swing doors.  
Stainless steel pin and ball bearings.  
Specify hand (right hand shown).  
Solid extruded/machined brass.

DIMENSIONS

Item	H	W	D	T	Hand
0181.00.12	100	75	16	3	RH
0181.00.13	100	75	16	3	LH
0181.00.22	120	75	16	3	RH
0181.00.23	120	75	16	3	LH
0181.00.32	140	75	16	3	RH
0181.00.33	140	75	16	3	LH

Dimensions given in millimeters.





## OFFSET PAUMELLE HINGE

## FLUTED SERIES

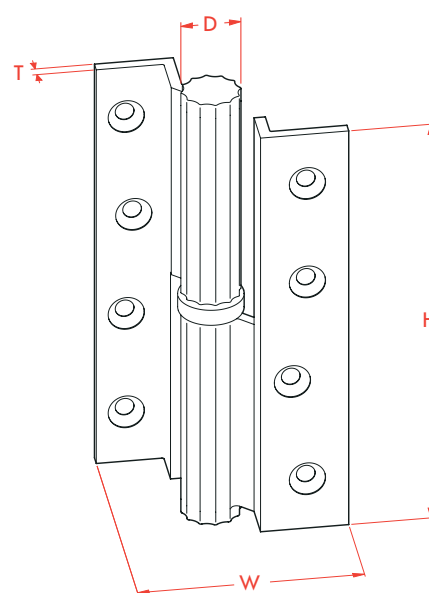
ART. NO. 0782

Designed for standard swing doors.  
Stainless steel pin and ball bearings.  
Specify hand (right hand shown).  
Solid extruded/machined brass.

### DIMENSIONS

Item	H	W	D	T	Hand
<b>0782.00.12</b>	100	60.5	16	3	RH
<b>0782.00.13</b>	100	60.5	16	3	LH
<b>0782.00.22</b>	120	60.5	16	3	RH
<b>0782.00.23</b>	120	60.5	16	3	LH
<b>0782.00.32</b>	140	60.5	16	3	RH
<b>0782.00.33</b>	140	60.5	16	3	LH

Dimensions given in millimeters.





FLUTED SERIES

OFFSET PAUMELLE HINGE

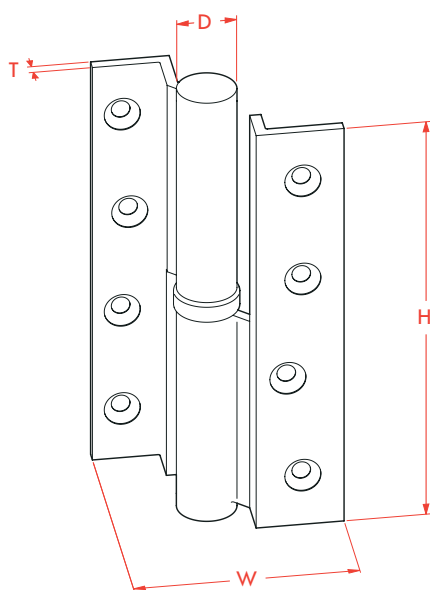
ART. NO. 0182

Designed for standard swing doors.  
Stainless steel pin and ball bearings.  
Specify hand (right hand shown).  
Solid extruded/machined brass.

DIMENSIONS

Item	H	W	D	T	Hand
0182.00.12	100	60.5	16	3	RH
0182.00.13	100	60.5	16	3	LH
0182.00.22	120	60.5	16	3	RH
0182.00.23	120	60.5	16	3	LH
0182.00.32	140	60.5	16	3	RH
0182.00.33	140	60.5	16	3	LH

Dimensions given in millimeters.





## PAUMELLE HINGE

## FLUTED SERIES

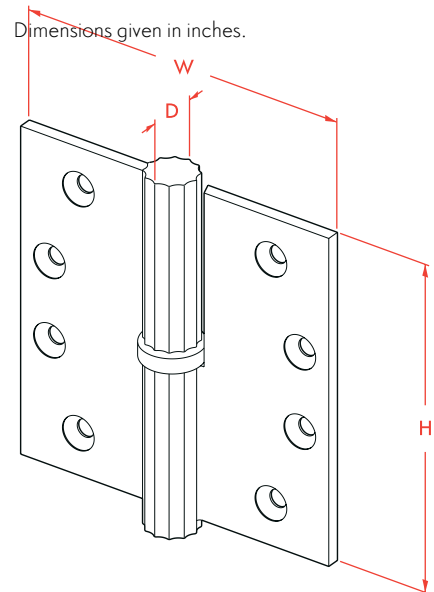
ART. NO. 0783

Designed for standard swing doors.  
Conforms with ANSI/BHMA  
A 156.7 Standards.  
Stainless steel pin and ball bearings.  
Leaf thickness: 3mm.  
Specify hand (right hand shown).  
Solid extruded/machined brass.

### DIMENSIONS

Item	H	W	D	Hand
<b>0783.00.12</b>	3.0	3.0	0.625	RH
<b>0783.00.12</b>	3.0	3.0	0.625	LH
<b>0783.00.22</b>	3.5	3.5	0.625	RH
<b>0783.00.23</b>	3.5	3.5	0.625	LH
<b>0783.00.32</b>	4.0	4.0	0.625	RH
<b>0783.00.33</b>	4.0	4.0	0.625	LH
<b>0783.00.42</b>	4.5	4.5	0.625	RH
<b>0783.00.43</b>	4.5	4.5	0.625	LH
<b>0783.00.52</b>	5.0	5.0	0.625	RH
<b>0783.00.53</b>	5.0	5.0	0.625	LH

Dimensions given in inches.



FLUTED SERIES

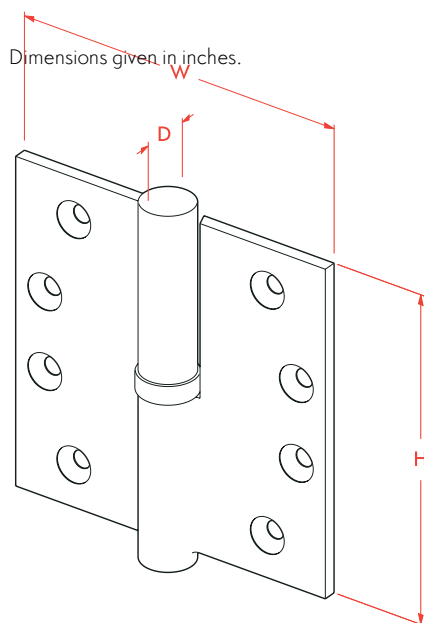
PAUMELLE HINGE

ART. NO. 0183

Designed for standard swing doors.  
Conforms with ANSI/BHMA  
A 156.7 Standards.  
Stainless steel pin and ball bearings.  
Leaf thickness: 3mm.  
Specify hand (right hand shown).  
Solid extruded/machined brass.

DIMENSIONS

Item	H	W	D	Hand
0183.00.12	3.0	3.0	0.625	RH
0183.00.12	3.0	3.0	0.625	LH
0183.00.22	3.5	3.5	0.625	RH
0183.00.23	3.5	3.5	0.625	LH
0183.00.32	4.0	4.0	0.625	RH
0183.00.33	4.0	4.0	0.625	LH
0183.00.42	4.5	4.5	0.625	RH
0183.00.43	4.5	4.5	0.625	LH
0183.00.52	5.0	5.0	0.625	RH
0183.00.53	5.0	5.0	0.625	LH





SLIDING DOOR HARDWARE

LIFT SLIDE HARDWARE

FLUSH PULLS



## LIFT SLIDE PULL

## FLUTED SERIES

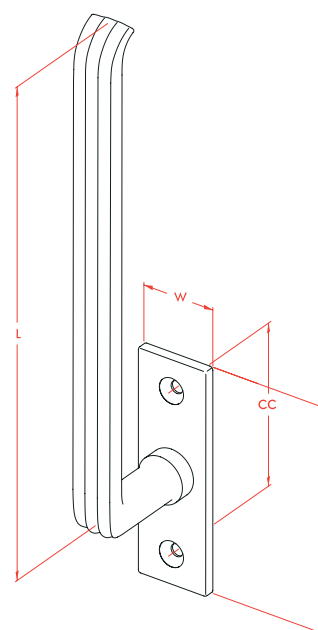
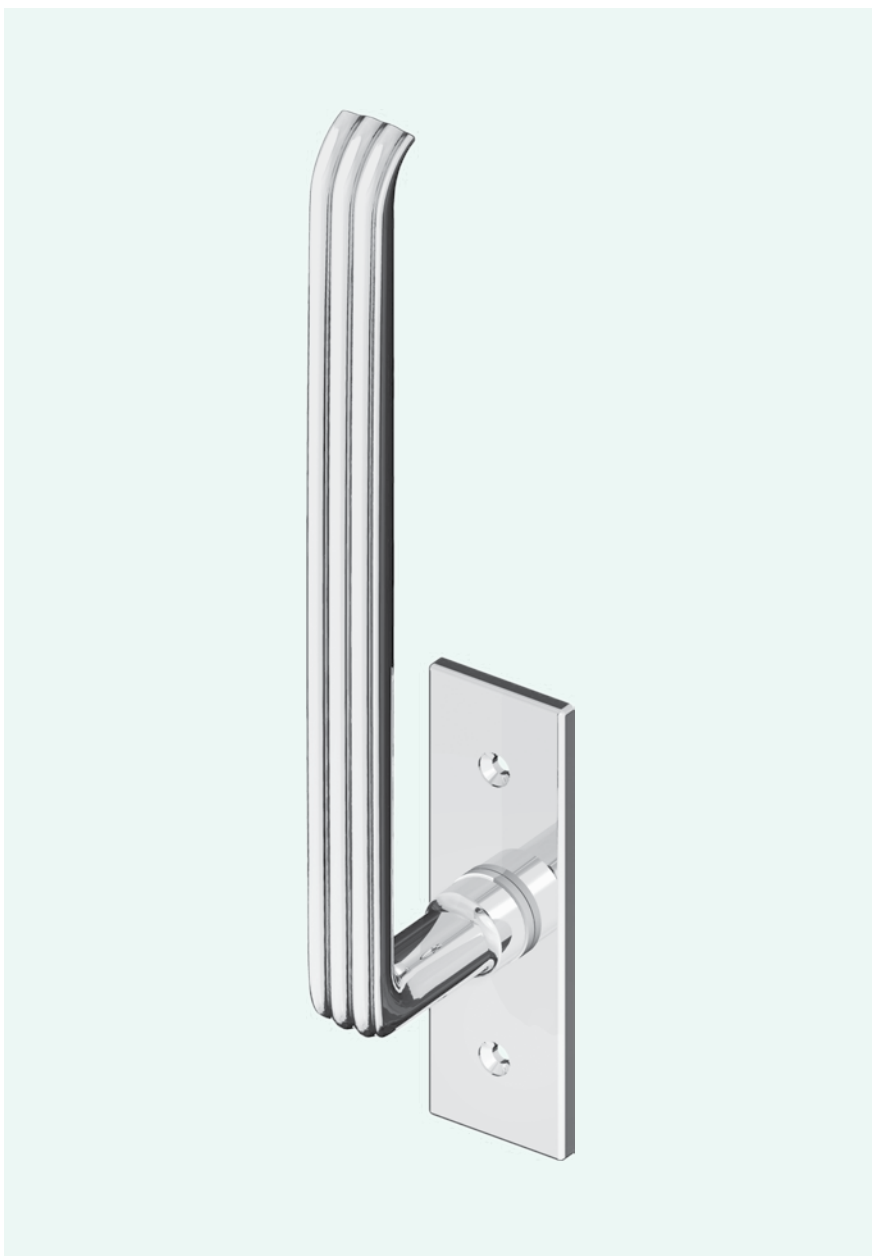
SET. NO. TS 0705.97

Regularly furnished with 10 mm spindle.  
Solid forged brass handle.  
Solid machined brass plate.

### DIMENSIONS

<b>L</b>	242
<b>W</b>	36
<b>H</b>	12
<b>CC</b>	80

Dimensions given in millimeters.



## FLUTED SERIES

## LIFT SLIDE PULL

SET. NO. TS 0705.99

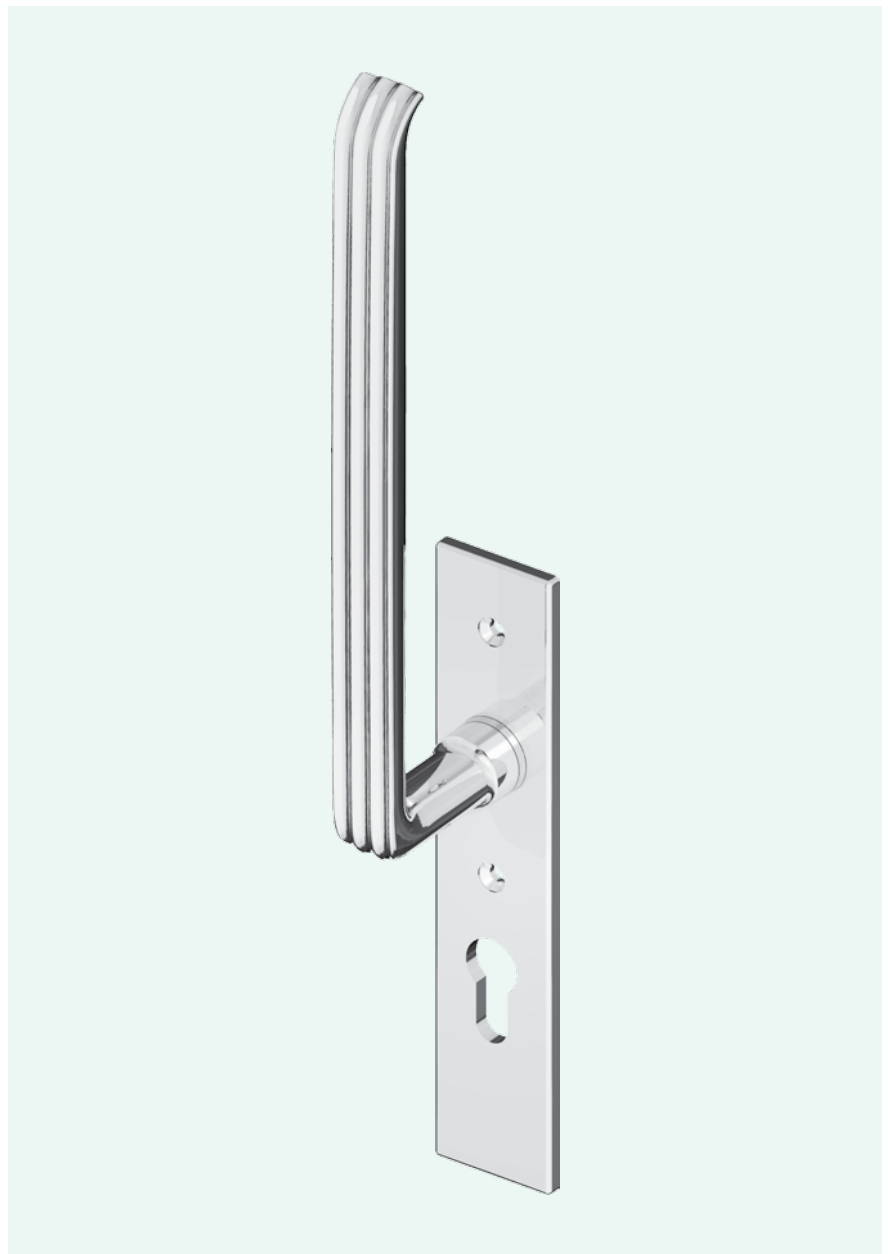
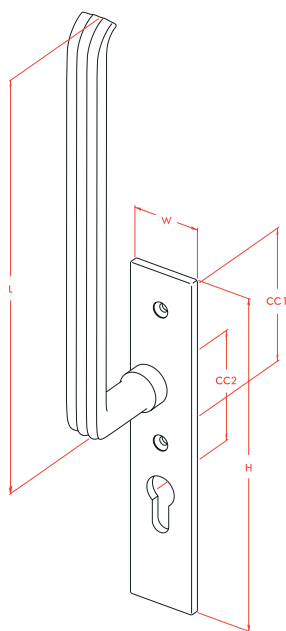
FOR PZ CYLINDERS

Regularly furnished with 10 mm spindle.  
With PZ escutcheon.  
Solid forged brass handle.  
Solid machined brass plate.

### DIMENSIONS

<b>L</b>	242
<b>W</b>	36
<b>H</b>	160
<b>CC1</b>	80
<b>CC2</b>	69

Dimensions given in millimeters.





## LIFT SLIDE PULL WITH CLICK-STOP

## FLUTED SERIES

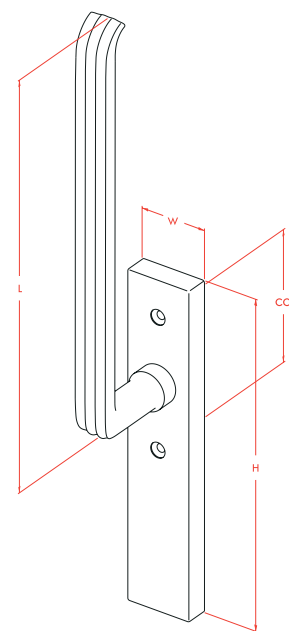
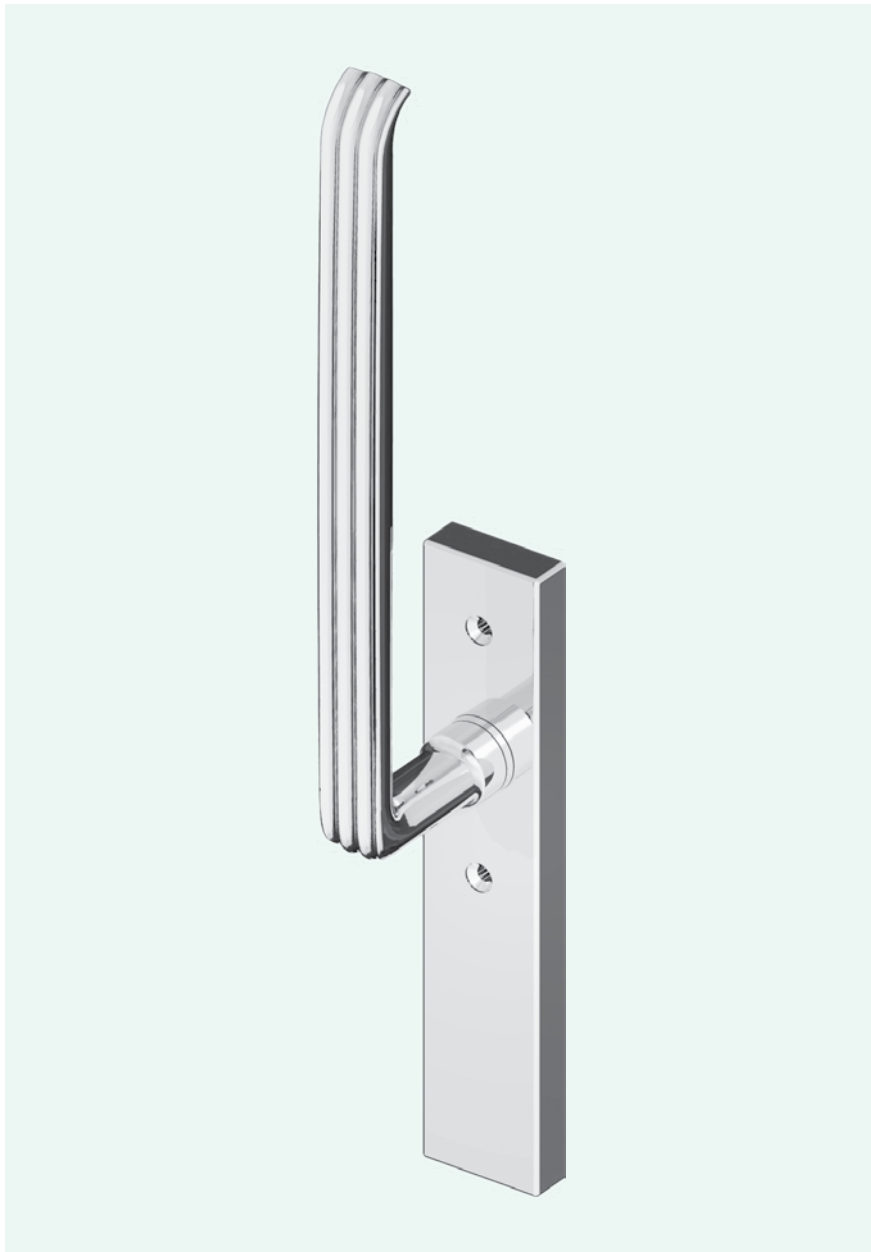
SET. NO. TS 0705.92

Regularly furnished with 10 mm spindle.  
Solid forged brass handle.  
Solid machined brass escutcheon plate.

### DIMENSIONS

<b>L</b>	242
<b>W</b>	40
<b>H</b>	200
<b>CC</b>	80

Dimensions given in millimeters.





FLUTED SERIES

LIFT SLIDE PULL WITH CLICK-STOP

SET. NO. TS 0705.96

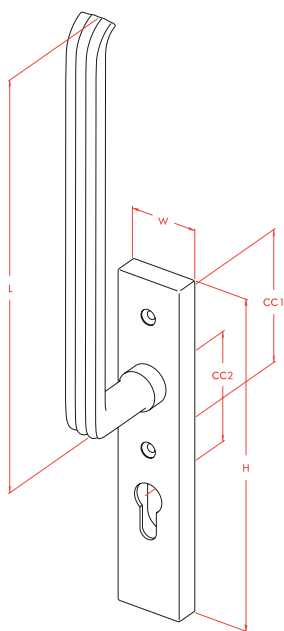
FOR PZ CYLINDERS

Regularly furnished with 10 mm spindle.  
With PZ escutcheon.  
Solid forged brass handle.  
Solid machined brass escutcheon plate.

DIMENSIONS

<b>L</b>	242
<b>W</b>	40
<b>H</b>	200
<b>CC1</b>	80
<b>CC2</b>	69

Dimensions given in millimeters.





LIFT SLIDE FLUSH PULL

FLUTED SERIES

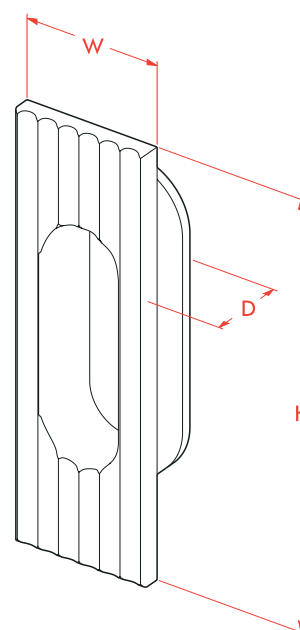
ART. NO. 0721.97

Through-bolted to lift slide handle.  
Solid machined brass.

#### DIMENSIONS

H	125
W	40
D	20

Dimensions given in millimeters.



FLUTED SERIES

LIFT SLIDE FLUSH PULL

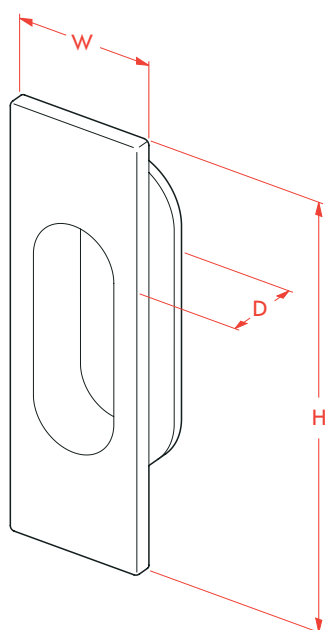
ART. NO. 0121.97

Through-bolted to lift slide handle.  
Solid machined brass.

DIMENSIONS

<b>H</b>	125
<b>W</b>	40
<b>D</b>	20

Dimensions given in millimeters.





## LIFT SLIDE FLUSH PULL

## FLUTED SERIES

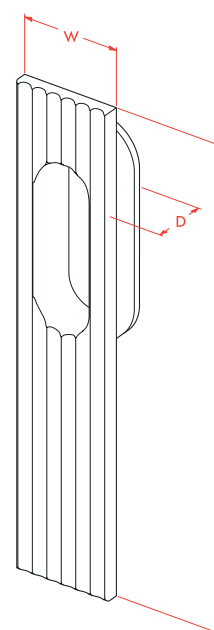
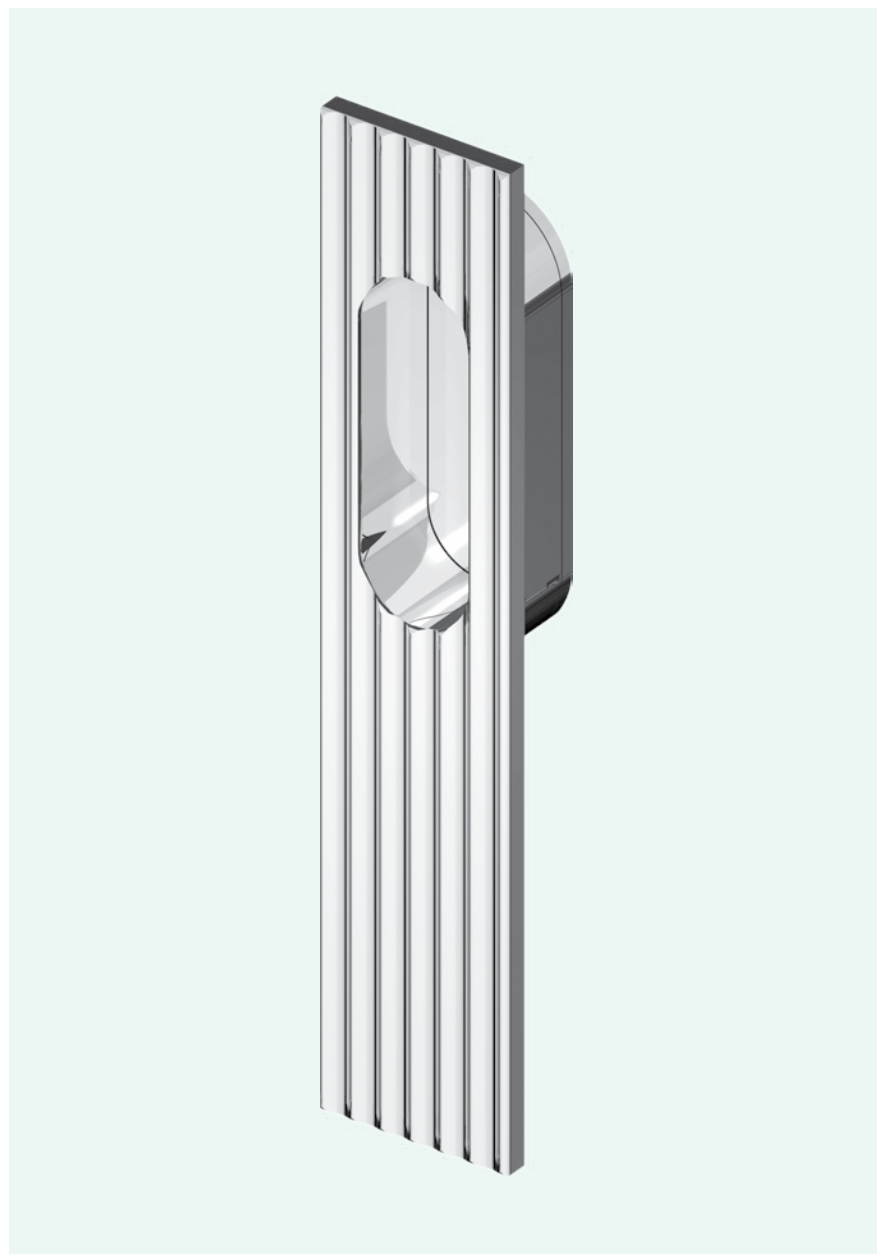
ART. NO. 0721.98

Through-bolted to lift slide handle.  
Solid machined brass.

### DIMENSIONS

H	200
W	40
D	20

Dimensions given in millimeters.



FLUTED SERIES

LIFT SLIDE FLUSH PULL

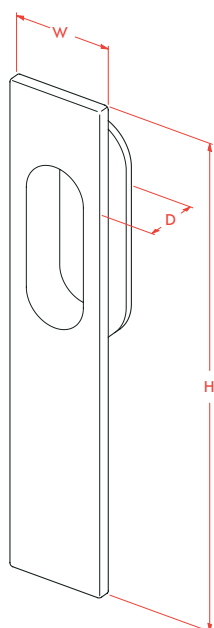
ART. NO. 0121.98

Through-bolted to lift slide handle.  
Solid machined brass.

DIMENSIONS

<b>H</b>	200
<b>W</b>	40
<b>D</b>	20

Dimensions given in millimeters.





LIFT SLIDE FLUSH PULL  
FOR PZ CYLINDERS

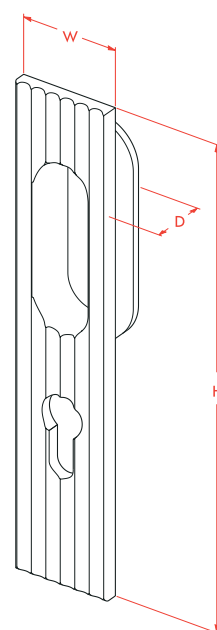
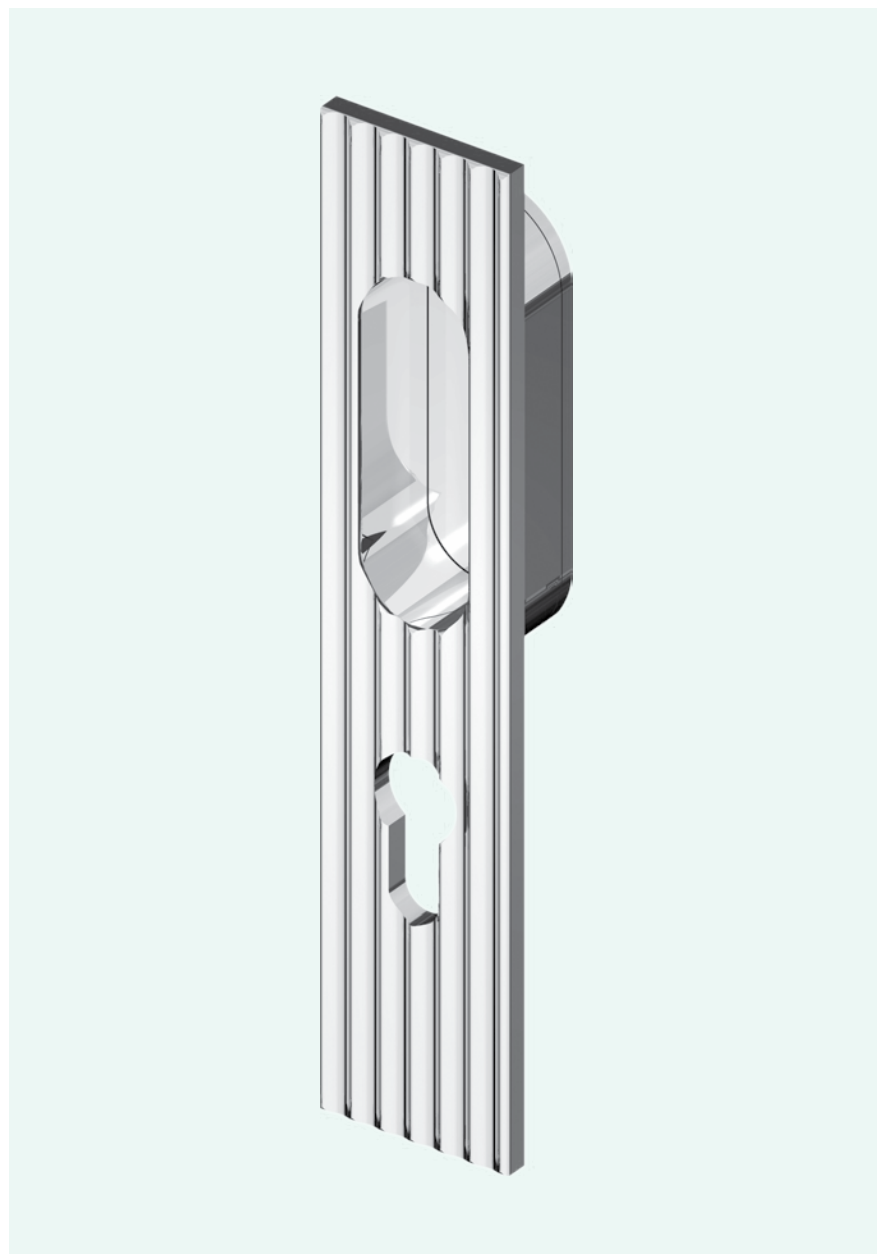
FLUTED SERIES  
ART. NO. 0721.99

Through-bolted to lift slide handle.  
Solid machined brass.

DIMENSIONS

H	200
W	40
D	20

Dimensions given in millimeters.



FLUTED SERIES

ART. NO. 0121.99

LIFT SLIDE FLUSH PULL

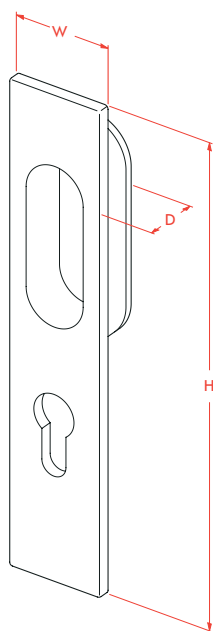
FOR PZ CYLINDERS

For PZ cylinders.  
Through-bolted to lift slide handle.  
Solid machined brass.

DIMENSIONS

H	200
W	40
D	20

Dimensions given in millimeters.





## FLUSH PULL

## FLUTED SERIES

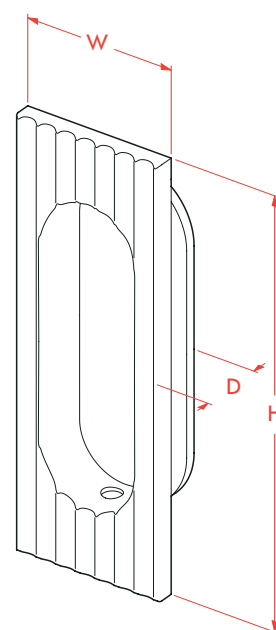
ART. NO. 0722

For surface-mounted applications.  
Available with or without screw holes.  
Solid machined brass.

### DIMENSIONS

Item	H	W	D
<b>0722.00.01</b>	75	35	18
<b>0722.00.11</b>	100	40	19.5
<b>0722.00.21</b>	125	45	21
<b>0722.00.31</b>	150	50	22.5
<b>0722.00.41</b>	175	55	24

Dimensions given in millimeters.





FLUTED SERIES

FLUSH PULL

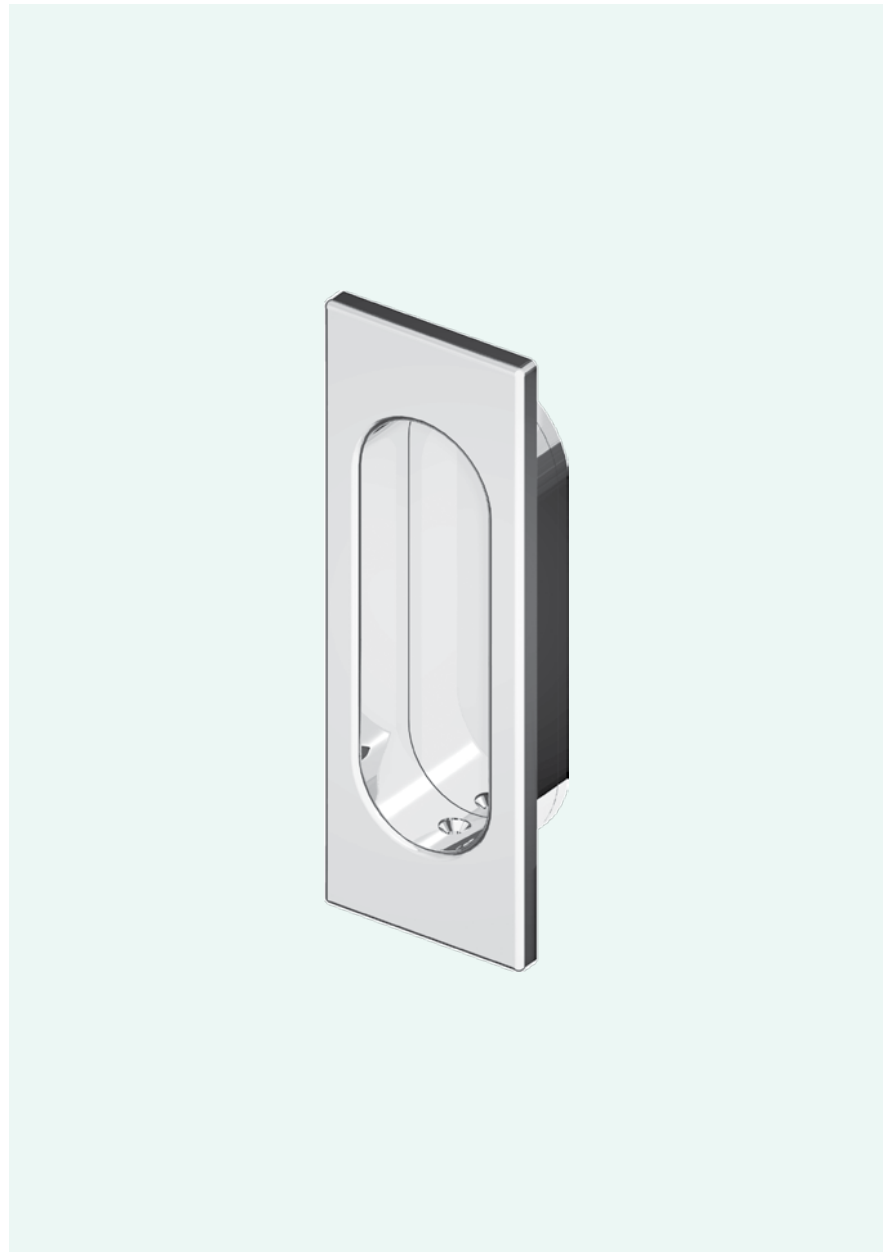
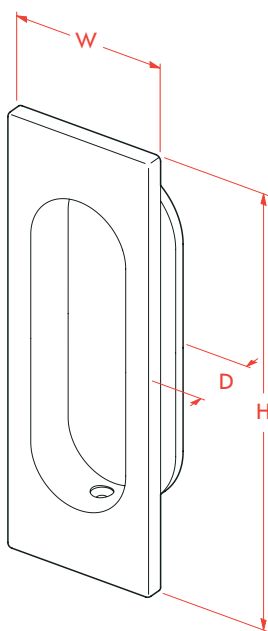
ART. NO. 0122

For surface-mounted applications.  
Available with or without screw holes.  
Solid machined brass.

DIMENSIONS

Item	H	W	D
<b>0122.00.01</b>	75	35	18
<b>0122.00.11</b>	100	40	19.5
<b>0122.00.21</b>	125	45	21
<b>0122.00.31</b>	150	50	22.5
<b>0122.00.41</b>	175	55	24

Dimensions given in millimeters.





WINDOW & PATIO DOOR HARDWARE

WINDOW HANDLE SETS

SASH LIFTS

CANE BOLTS

CRÉMONE BOLTS



## WINDOW HANDLE SET

## FLUTED SERIES

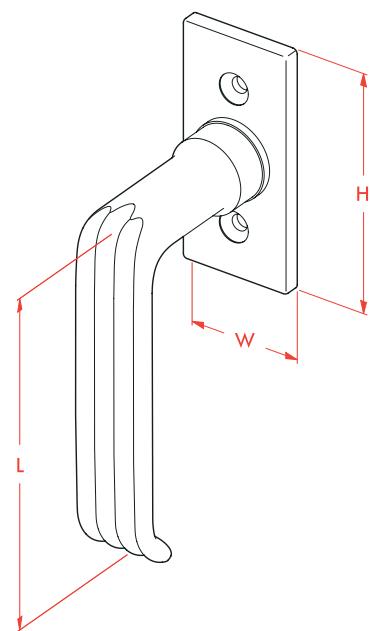
SET. NO. CS 07191

Window handle set with fluted lever.  
Solid forged brass handle.  
Solid machined brass plate.

### DIMENSIONS

Lever Set	L	H	W
<b>CS 07191.01</b>	76	75	35
<b>CS 07191.11</b>	88	75	35
<b>CS 07191.21</b>	101	75	35
<b>CS 07191.31</b>	114	75	35
<b>CS 07191.41</b>	127	75	35

Dimensions given in millimeters.



FLUTED SERIES

WINDOW HANDLE SET

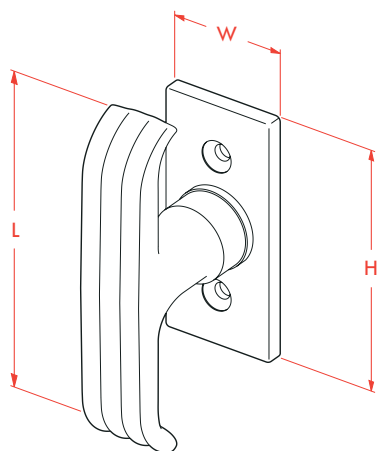
SET. NO. CS 07391

Window handle set with fluted t-handle.  
Solid forged brass handle.  
Solid machined brass plate.

DIMENSIONS

T-Handle Set	L	H	W
<b>CS 07391.01</b>	76	75	35
<b>CS 07391.11</b>	88	75	35
<b>CS 07391.21</b>	101	75	35
<b>CS 07391.31</b>	114	75	35
<b>CS 07391.41</b>	127	75	35

Dimensions given in millimeters.





## WINDOW HANDLE SET WITH RATCHET

## FLUTED SERIES

SET. NO. CS 07192

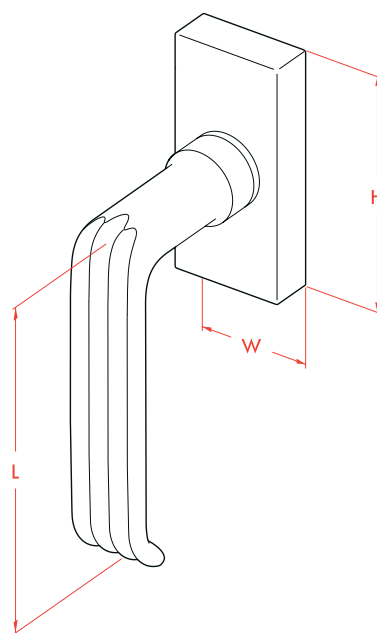


Window handle set with fluted lever.  
Solid forged brass handle.  
Solid machined brass plate.

### DIMENSIONS

Lever Set	L	H	W
<b>CS 07192.01</b>	76	75	35
<b>CS 07192.11</b>	88	75	35
<b>CS 07192.21</b>	101	75	35
<b>CS 07192.31</b>	114	75	35
<b>CS 07192.41</b>	127	75	35

Dimensions given in millimeters.



FLUTED SERIES

SET. NO. CS 07392

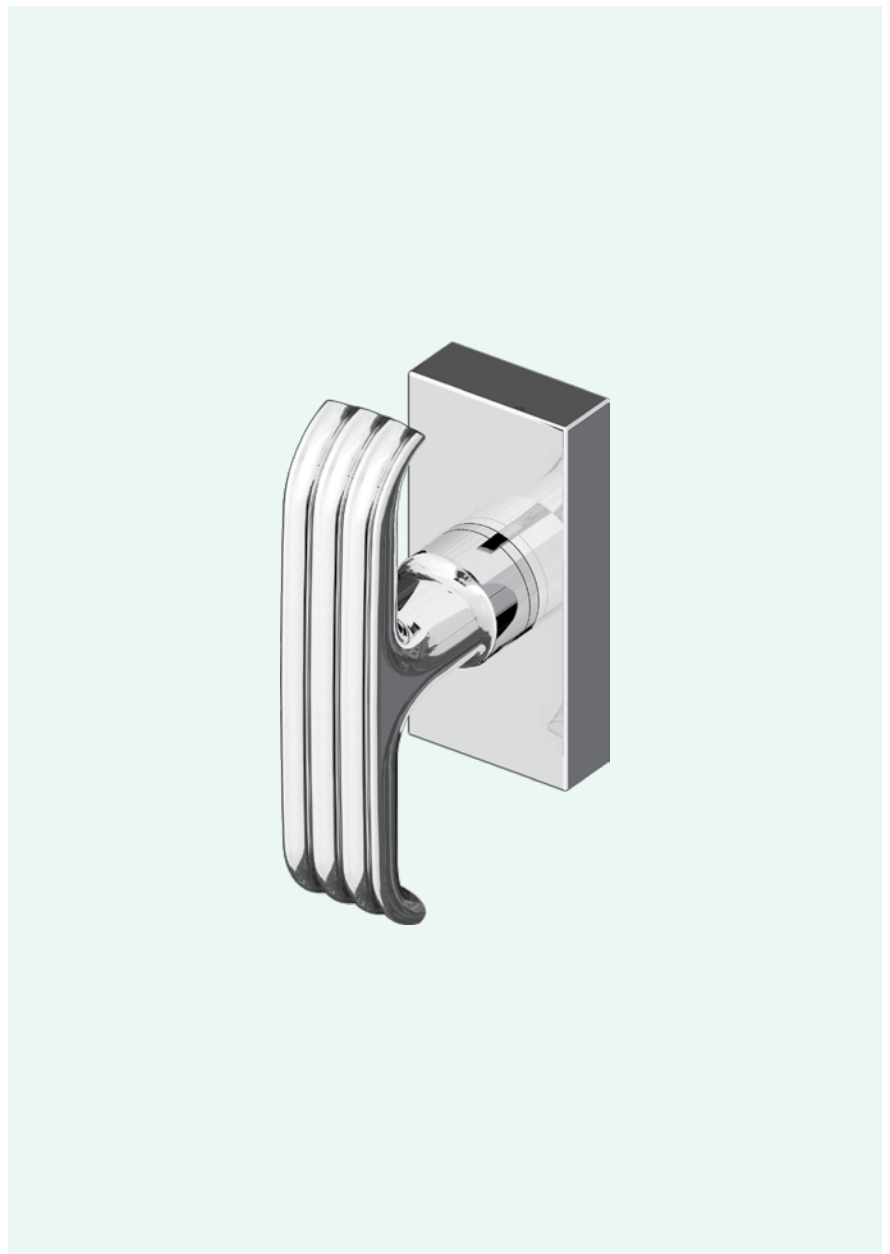
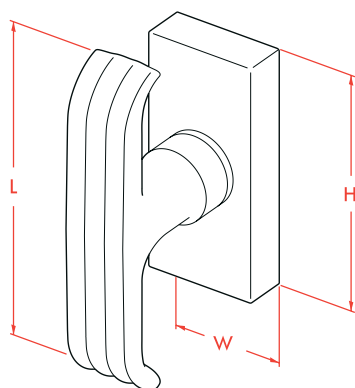
WINDOW HANDLE SET WITH RATCHET

Window handle set with fluted t-handle.  
Solid forged brass handle.  
Solid machined brass plate.

DIMENSIONS

T-Handle Set	L	H	W
<b>CS 07392.01</b>	75	75	35
<b>CS 07392.11</b>	88	75	35
<b>CS 07392.21</b>	101	75	35
<b>CS 07392.31</b>	114	75	35
<b>CS 07392.41</b>	127	75	35

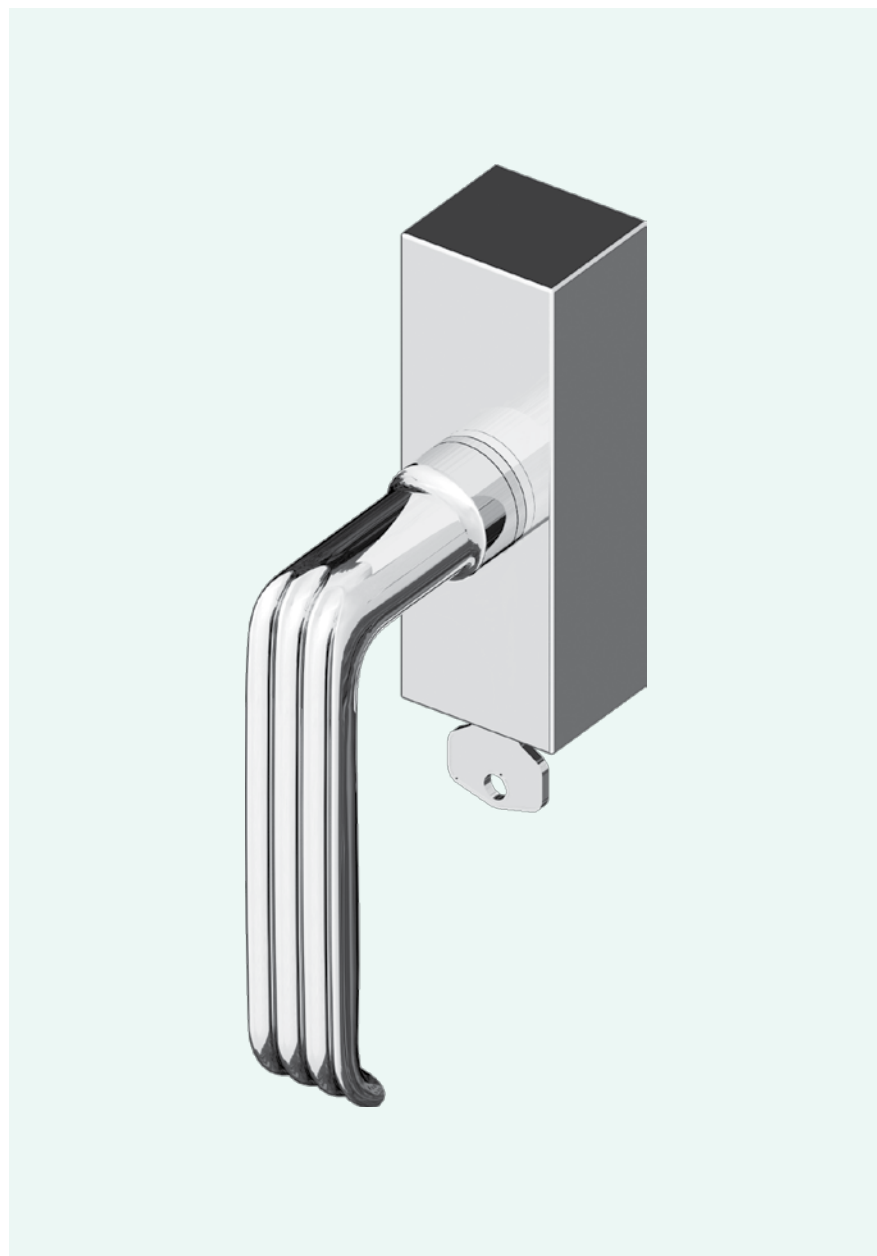
Dimensions given in millimeters.





WINDOW HANDLE SET  
WITH SECURITY RATCHET

FLUTED SERIES  
SET. NO. CS 07193

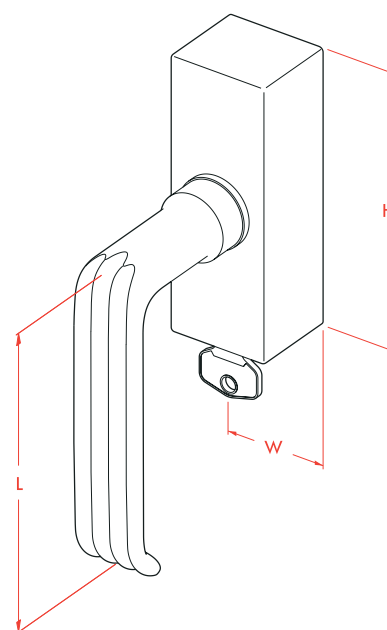


Window handle set with fluted lever.  
Solid forged brass handle.  
Solid machined brass plate.

DIMENSIONS

Lever Set	L	H	W
<b>CS 07193.01</b>	76	98	35
<b>CS 07193.11</b>	88	98	35
<b>CS 07193.21</b>	101	98	35
<b>CS 07193.31</b>	114	98	35
<b>CS 07193.41</b>	127	98	35

Dimensions given in millimeters.





FLUTED SERIES

SET. NO. CS 07393

WINDOW HANDLE SET

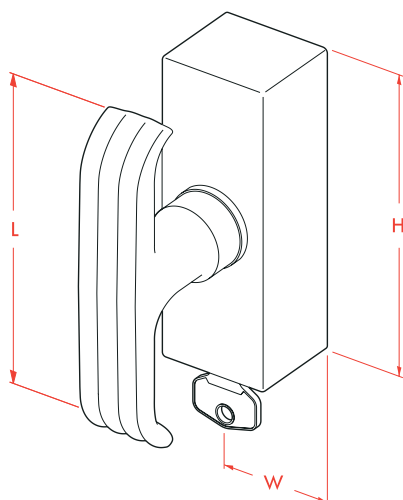
WITH SECURITY RATCHET

Window handle set with fluted t-handle.  
Solid forged brass handle.  
Solid machined brass plate.

DIMENSIONS

T-Handle Set	L	H	W
<b>CS 07393.01</b>	76	98	35
<b>CS 07393.11</b>	88	98	35
<b>CS 07393.21</b>	101	98	35
<b>CS 07393.31</b>	114	98	35
<b>CS 07393.41</b>	127	98	35

Dimensions given in millimeters.





## WINDOW CREMONESE SET

## FLUTED SERIES

SET. NO. CS 07181

Cremonese set with fluted lever (size M).  
See price list for other handle options.  
Solid forged brass handle.  
Solid machined brass escutcheon.

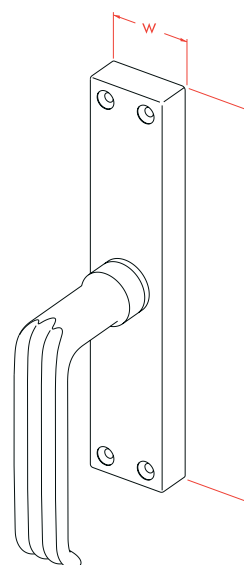
### DIMENSIONS

Standard Set	H	W	Spindle
<b>CS 07181.21.1</b>	175	35	7 x 35
<b>CS 07181.21.2</b>	175	35	7 x 45

Gratz Set	H	W
<b>CS 07181.21.3</b>	175	35

Ratcheted Set	H	W	Spindle
<b>CS 07181.21.4</b>	175	35	7 x 35
<b>CS 07181.21.5</b>	175	35	7 x 45

Dimensions given in millimeters.



FLUTED SERIES

WINDOW CREMONESE SET

SET. NO. CS 07381

Cremonese set with fluted t-handle  
(size M).  
See price list for other handle options.  
Solid forged brass handle.  
Solid machined brass escutcheon.

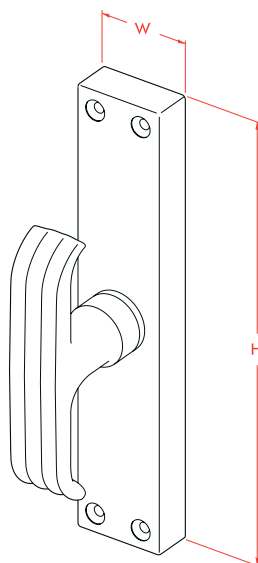
DIMENSIONS

Standard Set	H	W	Spindle
<b>CS 07381.21.1</b>	175	35	7 x 35
<b>CS 07181.21.2</b>	175	35	7 x 45

Gratz Set	H	W
<b>CS 07381.21.3</b>	175	35

Ratcheted Set	H	W	Spindle
<b>CS 07381.21.4</b>	175	35	7 x 35
<b>CS 07381.21.5</b>	175	35	7 x 45

Dimensions given in millimeters.





## SASH LIFT

## FLUTED SERIES

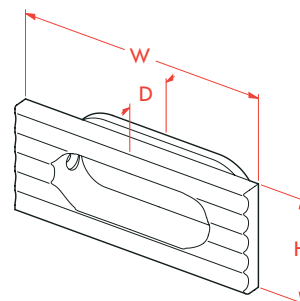
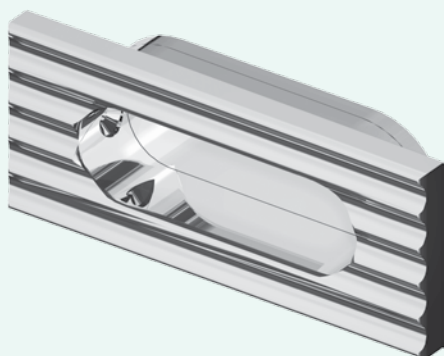
ART. NO. 0728

For surface-mounted applications.  
Solid machined brass.

### DIMENSIONS

Item	W	H	D
<b>0728.00.01</b>	75	35	18
<b>0728.00.11</b>	100	40	19.5
<b>0728.00.21</b>	125	45	21
<b>0728.00.31</b>	150	50	22.5
<b>0728.00.41</b>	175	55	2

Dimensions given in millimeters.



FLUTED SERIES

SASH LIFT

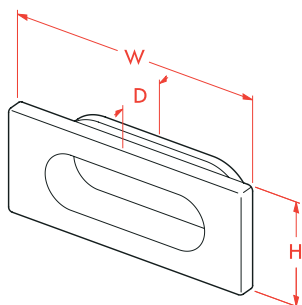
ART. NO. 0128

For surface-mounted applications.  
Solid machined brass.

DIMENSIONS

Item	W	H	D
<b>0128.00.01</b>	75	35	18
<b>0128.00.11</b>	100	40	19.5
<b>0128.00.21</b>	125	45	21
<b>0128.00.31</b>	150	50	22.5
<b>0128.00.41</b>	175	55	2

Dimensions given in millimeters.





FLUTED SERIES

CANE BOLT SET

SET. NO. CS 07761

Cane bolt set with fluted cabinet knob  
(size M).

Solid turned brass handle.

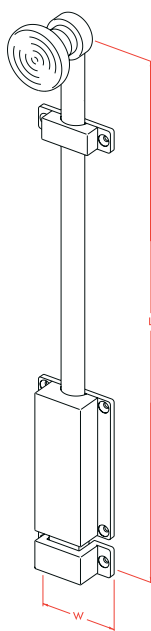
Solid machined brass escutcheon,  
guides, and strikes.

Solid extruded brass rods.

DIMENSIONS

Set	W	L	Guides
<b>CS 07761.71.1</b>	44.5	300	1
<b>CS 07761.71.2</b>	44.5	450	1
<b>CS 07761.71.3</b>	44.5	600	2
<b>CS 07761.71.4</b>	44.5	750	2
<b>CS 07761.71.5</b>	44.5	900	3

Dimensions given in millimeters.





## CRÉMONE BOLT SET

## FLUTED SERIES

SET. NO. CS 07132

Crémone bolt set with fluted lever (size M).

See price list for other handle options.

Solid forged brass handle.

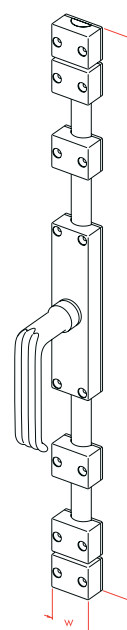
Solid machined brass escutcheon, guides, and strikes.

Solid extruded brass rods.

### DIMENSIONS

Set	W	L	Guides
<b>CS 07132.21.1</b>	36	2500	4
<b>CS 07132.21.2</b>	36	2850	5
<b>CS 07132.21.3</b>	36	3200	6
<b>CS 07132.21.4</b>	36	3750	7
<b>CS 07132.21.5</b>	36	5000	8

Dimensions given in millimeters.





## FLUTED SERIES

SET. NO. CS 07332

## CRÉMONE BOLT SET

Crémone bolt set with fluted t-handle (size M).

See price list for other handle options.

Solid forged brass handle.

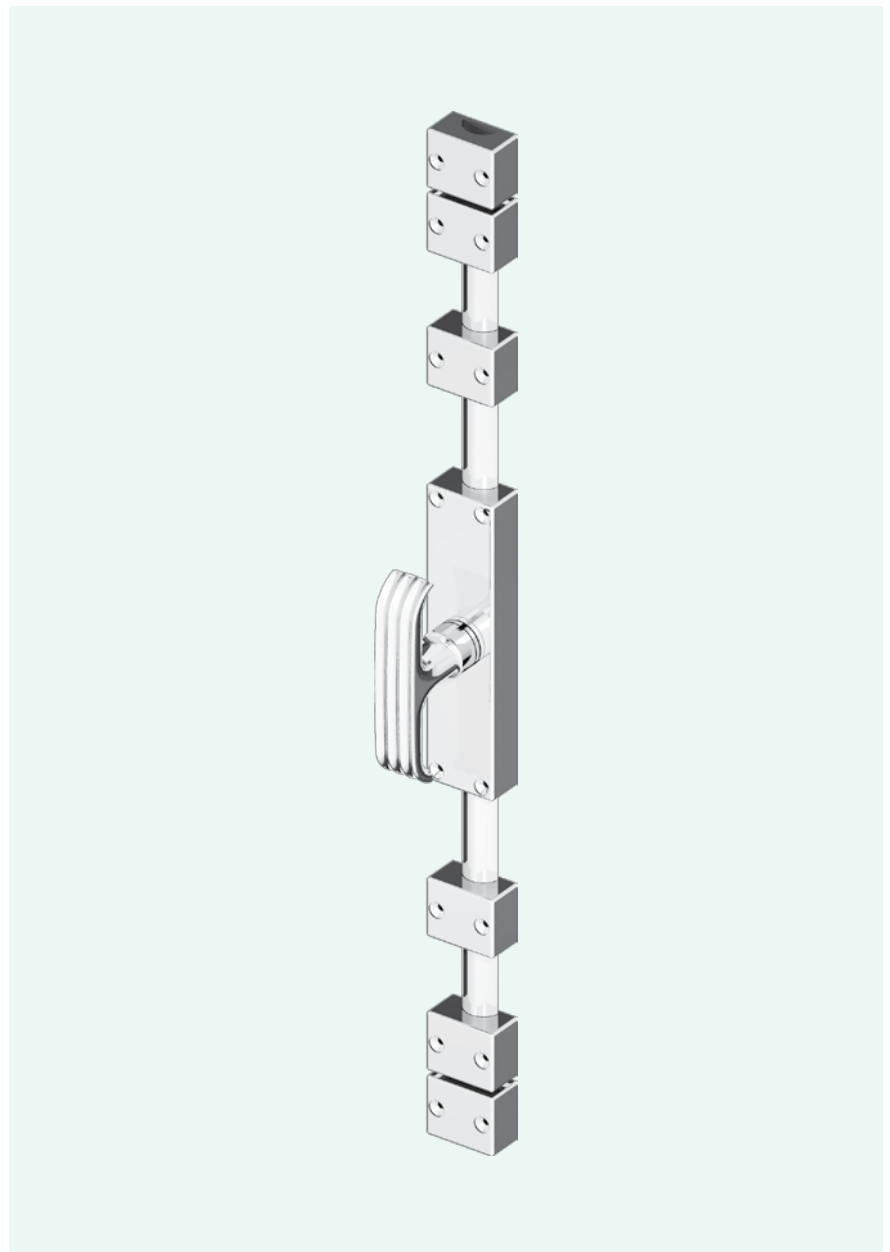
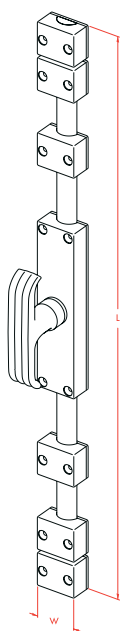
Solid machined brass escutcheon, guides, and strikes.

Solid extruded brass rods.

### DIMENSIONS

Set	W	L	Guides
<b>CS 07332.21.1</b>	36	2500	4
<b>CS 07332.21.2</b>	36	2850	5
<b>CS 07332.21.3</b>	36	3200	6
<b>CS 07332.21.4</b>	36	3750	7
<b>CS 07332.21.5</b>	36	5000	8

Dimensions given in millimeters.





ACCESSORIES

FLOOR STOPS

CABINET HARDWARE



## CYLINDRICAL FLOOR STOP

## FLUTED SERIES

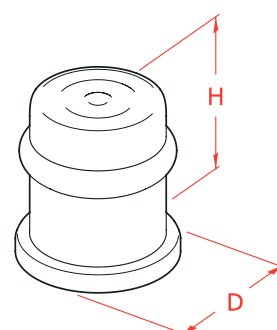
ART. NO. 0761

Solid turned brass.

### DIMENSIONS

Item	H	D
<b>0761.00.01</b>	39	35
<b>0761.00.11</b>	44	35
<b>0761.00.21</b>	49	35
<b>0761.00.31</b>	54	35
<b>0761.00.41</b>	59	35

Dimensions given in millimeters.



FLUTED SERIES

ART. NO. 0161

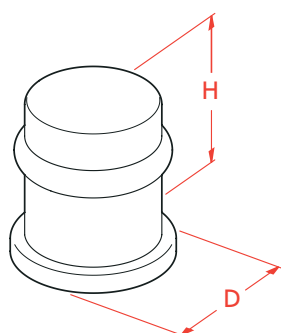
CYLINDRICAL FLOOR STOP

Solid turned brass.

DIMENSIONS

Item	H	D
0161.00.01	39	35
0161.00.11	44	35
0161.00.21	49	35
0161.00.31	54	35
0161.00.41	59	35

Dimensions given in millimeters.





FLUTED TUBE PULL  
FOR CABINETS

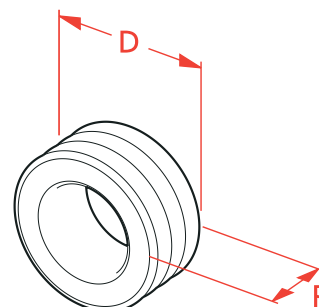
FLUTED SERIES  
ART. NO. 0710

Solid turned brass.

DIMENSIONS

Item	D	P
<b>0710.00.51</b>	20	9.3
<b>0710.00.61</b>	25	11.5
<b>0710.00.71</b>	30	13.9
<b>0710.00.81</b>	35	16.2
<b>0710.00.91</b>	40	18.5

Dimensions given in millimeters.



## FLUTED SERIES

ART. NO. 0711

## PULL HANDLE

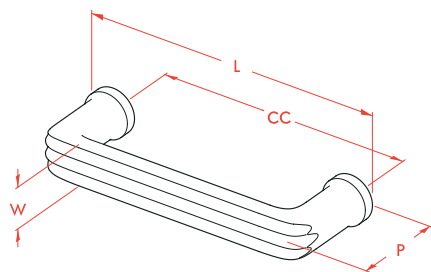
FOR WINDOWS AND CABINETS

Solid forged brass.

### DIMENSIONS

Item	L	CC	P	W
0711.00.51	75.5	64	25.6	10.4
0711.00.61	94.4	80	30.7	13.2
0711.00.71	113.2	96	35.5	15.7
0711.00.81	132.1	112	40.3	18.4
0711.00.91	151.0	128	45.1	21.1

Dimensions given in millimeters.





## CABINET KNOB

## FLUTED SERIES

ART. NO. 0707

Solid turned brass.

### DIMENSIONS

Item	Size	D	P
<b>0707.00.51</b>	XS	20	14
<b>0707.00.61</b>	S	25	18
<b>0707.00.71</b>	M	30	22
<b>0707.00.81</b>	L	35	25
<b>0707.00.91</b>	XL	40	28.5

Dimensions given in millimeters.

