



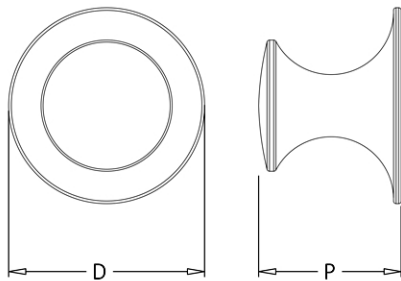
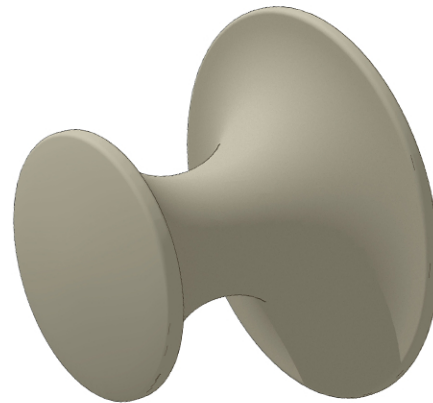
# ATELIER BONOMI

## Pomolino Serie 507 507 Series Cabinet Knob

### Dimensioni Dimensions

	D	P
XS	20	15
S	24,5	18
M	29	21
L	33,5	24
XL	38	27,5

Dimensioni in millimetri  
Dimensions given in millimeters



Fornito con vite M4.  
Disponibile in tutte le finiture standard. Dimensioni e finiture su misura  
disponibili su richiesta.  
Regularly furnished with M4 screw. Additional sizes available by special order.  
Available in standard and custom finishes.